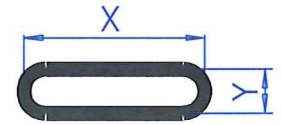


PIECES DETACHEES BARRES EXPANSIBLES A BARRETTES

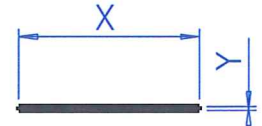
VESSIE PLATE POLYURETHANE

| X | Y | Ref: |
|----|-----|------|
| 10 | 2.3 | VP10 |
| 15 | 3.4 | VP15 |
| 20 | 4 | VP20 |



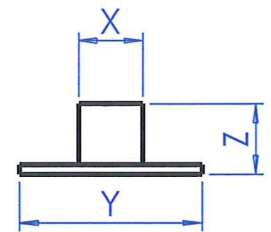
FILMS DE PROTECTION

| X | Y | Ref: |
|----|-----|------|
| 10 | 0.4 | FP10 |
| 15 | 0.4 | FP15 |
| 20 | 0.4 | FP20 |



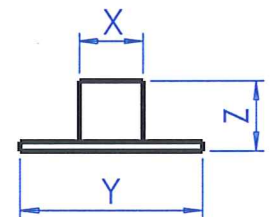
BARRETTES CAOUTCHOUC

| X | Y | Z | Ref: |
|----|----|-----|------|
| 6 | 10 | 4.5 | BC6 |
| 10 | 15 | 8 | BC10 |
| 15 | 20 | 8 | BC15 |



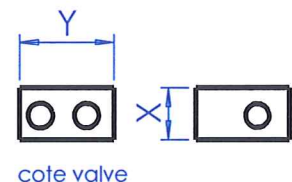
BARRETTES ALUMINIUM

| X | Y | Z | Ref: |
|----|----|---|------|
| 10 | 15 | 8 | BA10 |
| 15 | 20 | 8 | BA15 |



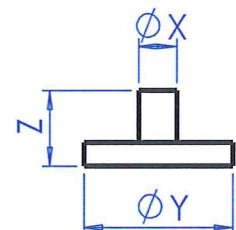
JEU COIN DE BLOCAGE (1 JEU POUR 1 BARRETTE SOIT 4 PIECES ALU)

| X | Y | Ref: |
|----|----|------|
| 10 | 20 | CB10 |
| 15 | 25 | CB15 |
| 20 | 25 | CB20 |



GICLEUR AIR LAITON

| X | Y | Z | Ref: |
|-----|----|-----|--------|
| 2 | 6 | 4 | GAL 2 |
| 4.5 | 11 | 6.2 | GAL4.5 |



VALVE CUVETTE : Filetage **-10x100 ref: VC 10100 Montage standard MBC**
 -1/8 Npt ref: VC 1/8 Npt
 -3/8 Npt Gros debit ref: VC3/8 GD

VALVE OBUS : Filetage -10x100 ref: VO 10100
 -8x100 ref: VO 8100
 -1/8 Gaz ref: VO 1/8 Gaz

MBC
Guttin