

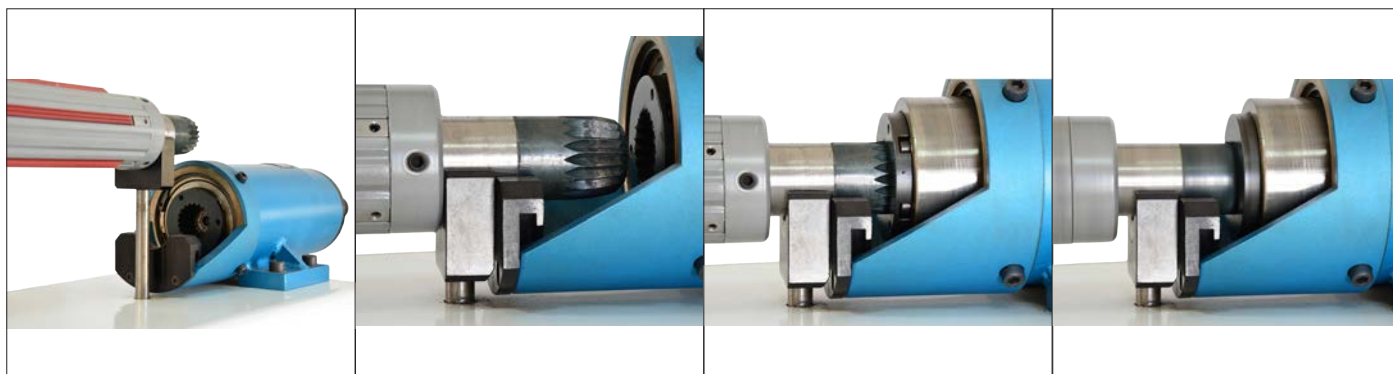
# Brevet MBC : Palier série 2000

## Avantages

- Travail à haute vitesse
- Autocentrage de la barre
- Aucune vibration
- Multifonction
- Réglage axiale pour alignement de lisière



Les paliers série 2000 (2100, 2200, 2300) sont des paliers pneumatiques qui simplifient vos manipulations et améliorent vos performances.



Etape 1

Etape 2

Etape 3

Etape 4

Placez votre barre sur le support de barre

Mettez en route votre système pneumatique

Grâce à son embout conique cranté, le palier série 2000 vient récupérer votre barre et la centre automatiquement. Son double cône facilite l'indexage et ne détériore pas la denture

Mise en rotation. Vous obtenez une rotation sans vibration qui vous permet désormais de travailler à des vitesses très élevées en toute sûreté.

## Options Possibles :

Supports de barre lisse



Têtes expansibles à coquilles



Supports de barre avec portée de roulement



Têtes expansibles à clavettes



# Palier série 2000,

## Un Palier Multifonction



### Pourquoi un Palier Multi-fonction ?

Le palier série 2000 est d'origine monté avec un embout conique. Cependant, MBC Guttin a travaillé sur sa conception pour qu'il réponde à vos attentes. Résultat : Il est désormais possible de travailler en entrepoint. MBC vous propose pour cela sa gamme de tête et broche expansible.

Vous trouverez tous types d'embouts femelles disponible sur ce palier et interchangeable facilement

Une demande spéciale ? Parlez-nous en !

Pour un travail directement sur mandrin, de type entrepoint, MBC vous propose sa gamme de têtes mécaniques ou expansibles



**Adaptateur  
conique**



**Adaptateur  
rond lisse**



**Adaptateur  
type Agricole**

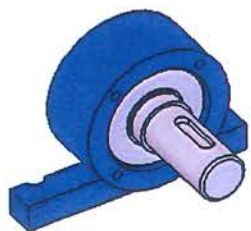
**Tête expansible  
à coquilles**



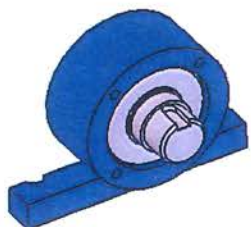
**Tête expansible  
à clavettes**



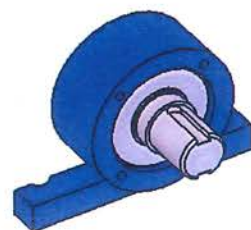
## ARBRES DE SORTIE



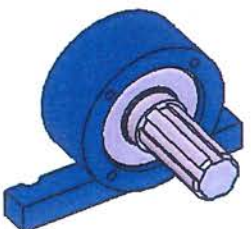
STD



MD



BD



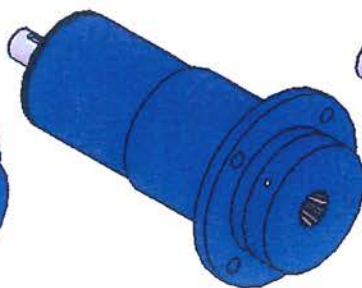
AC

Autres sur demande

## PALIER SERIE 2100



SFE



SFE/G



SFE/R

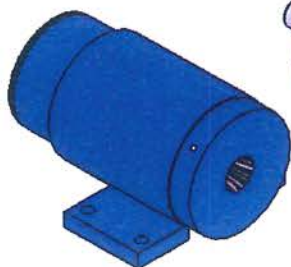


SFE/ST

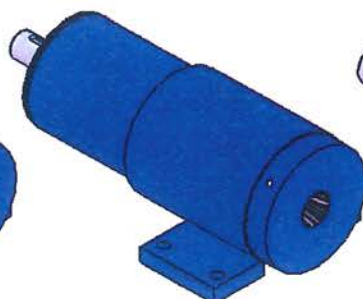


SFE/STG

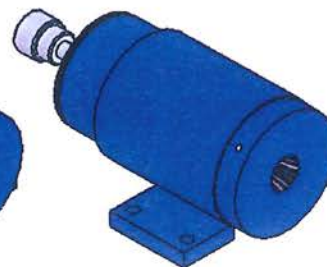
## PALIER SERIE 2000



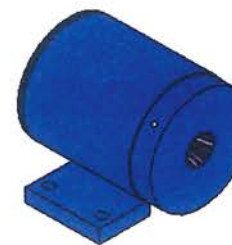
SFE



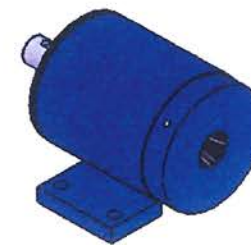
SFE/G



SFE/R



SFE/ST



SFE/STG

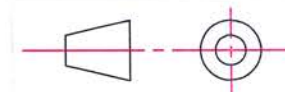
## PALIER SERIE 2000/2100

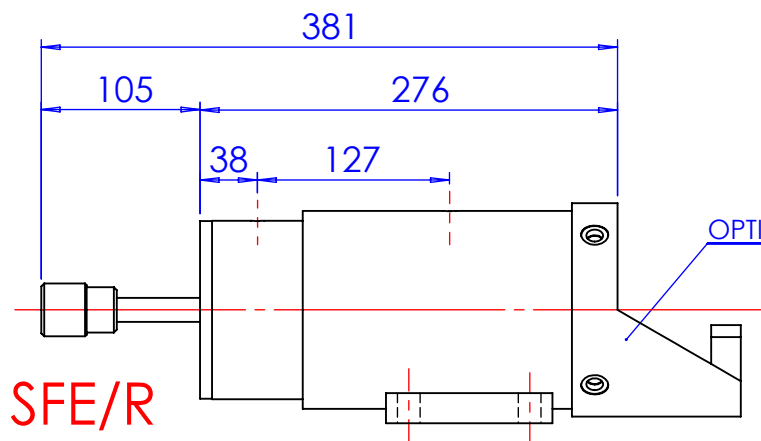
Disponible : - Serie 20/30 à 80/120

- En course 60 mm

- En course 100 mm

**MBC**  
*Guttin*

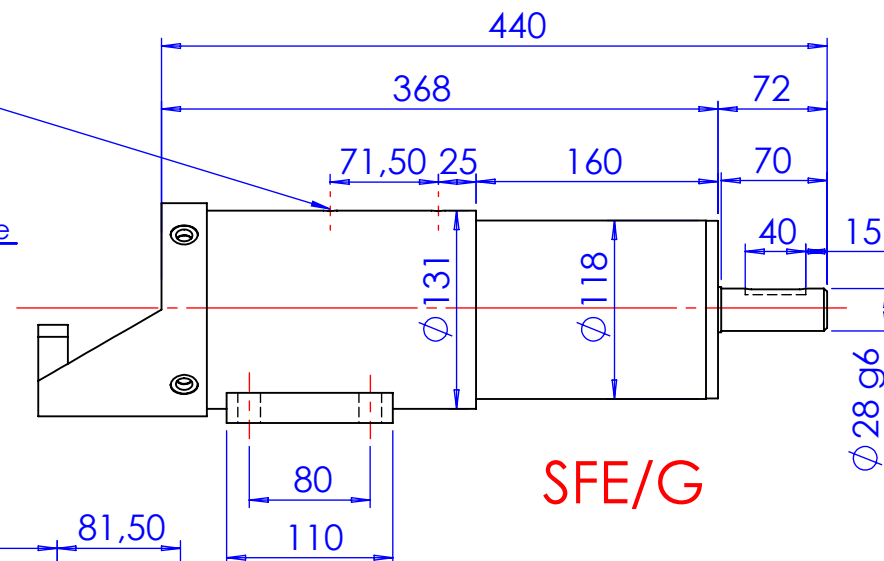




SFE/R

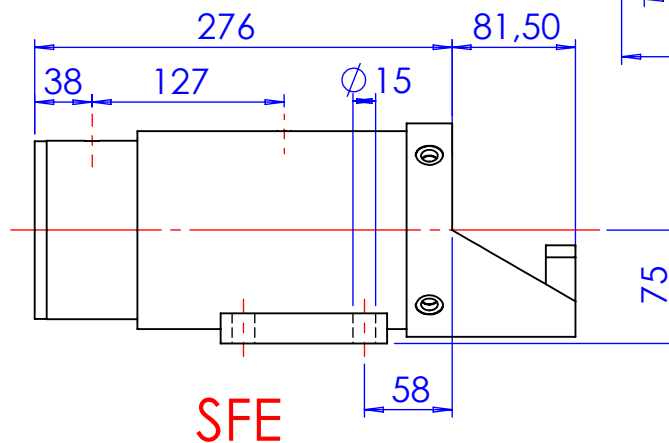
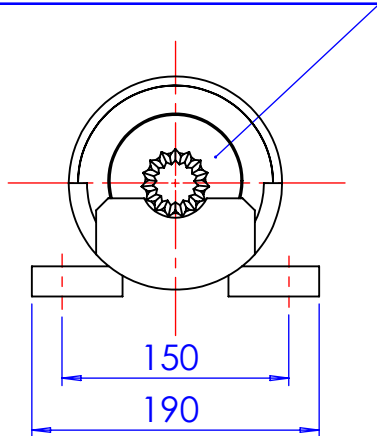
Alimentation air  
2 ø 1/4 GAZ

OPTIONS : support barre

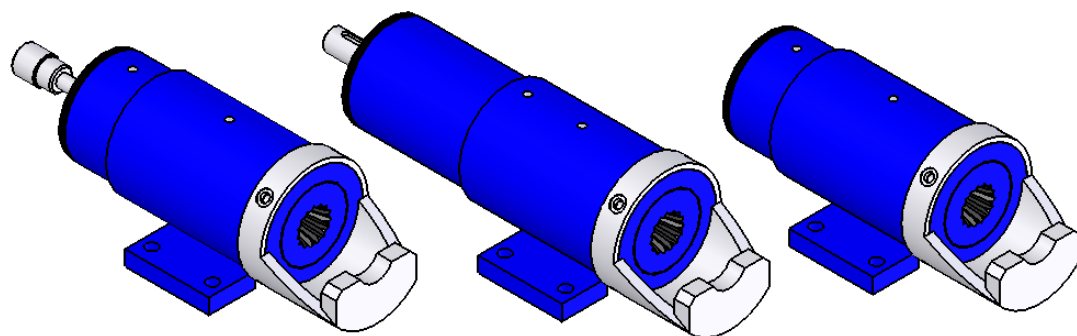


SFE/G

OPTIONS : adaptateur conique  
lisse ou crantée



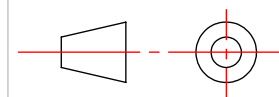
SFE



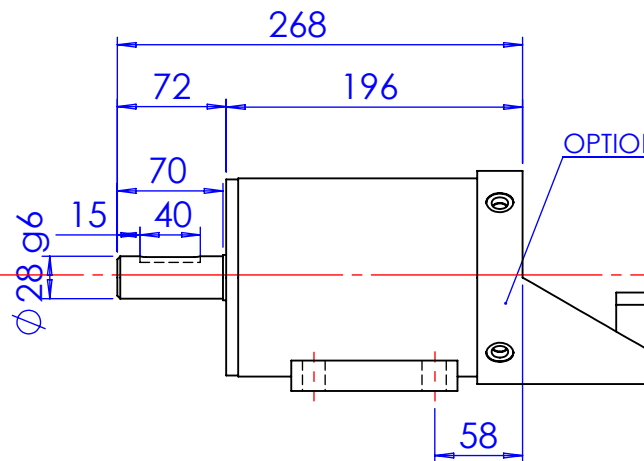
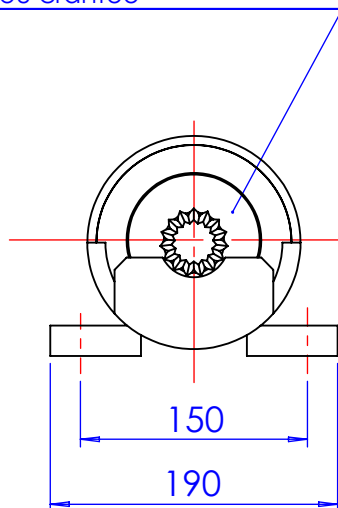
**PALIER PNEUMATIQUE  
SERIE 2000 20/30  
COURSE 60mm**

**Poids bobine : 8000 N  
Disponible en course 100 mm**

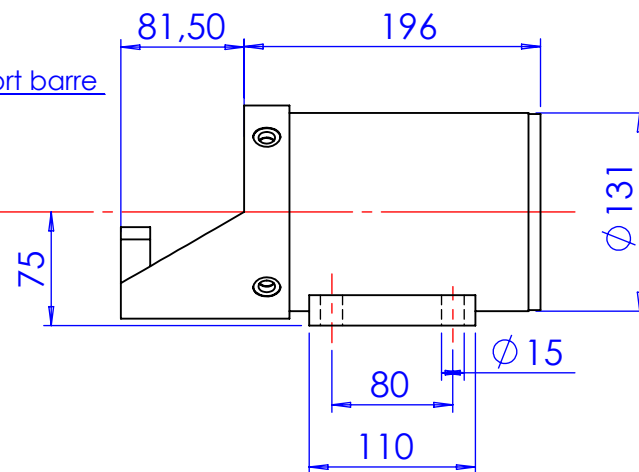
*MBC  
Guttin*



OPTIONS : adaptateur conique  
lisse ou crantée

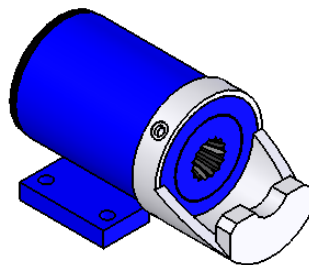
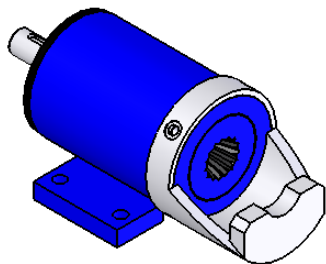


OPTIONS : support barre



SFE/STG

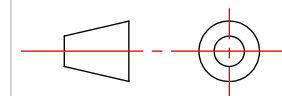
SFE/ST

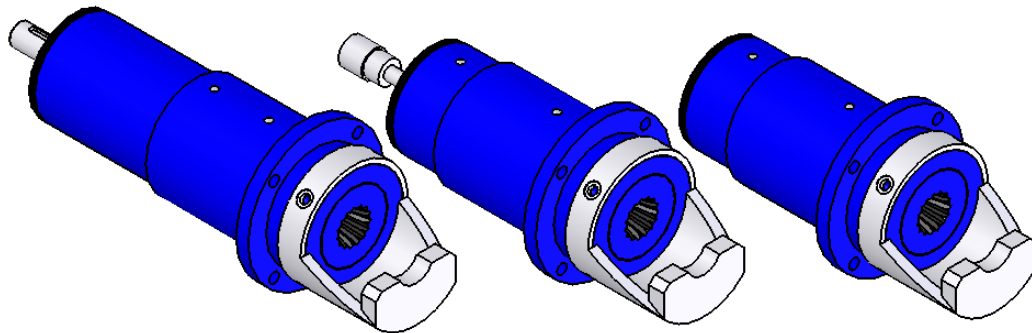
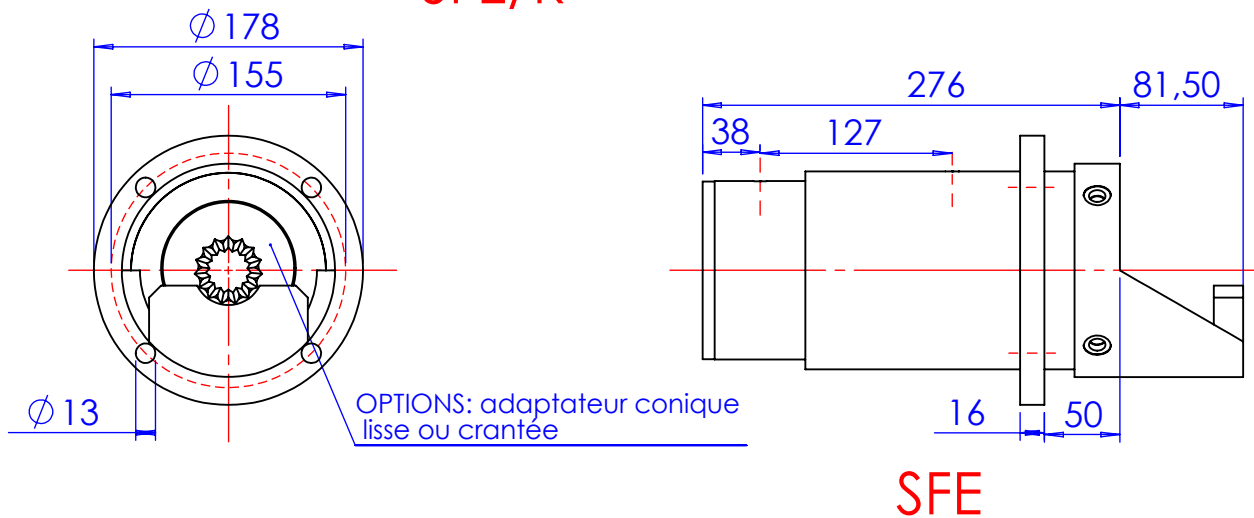
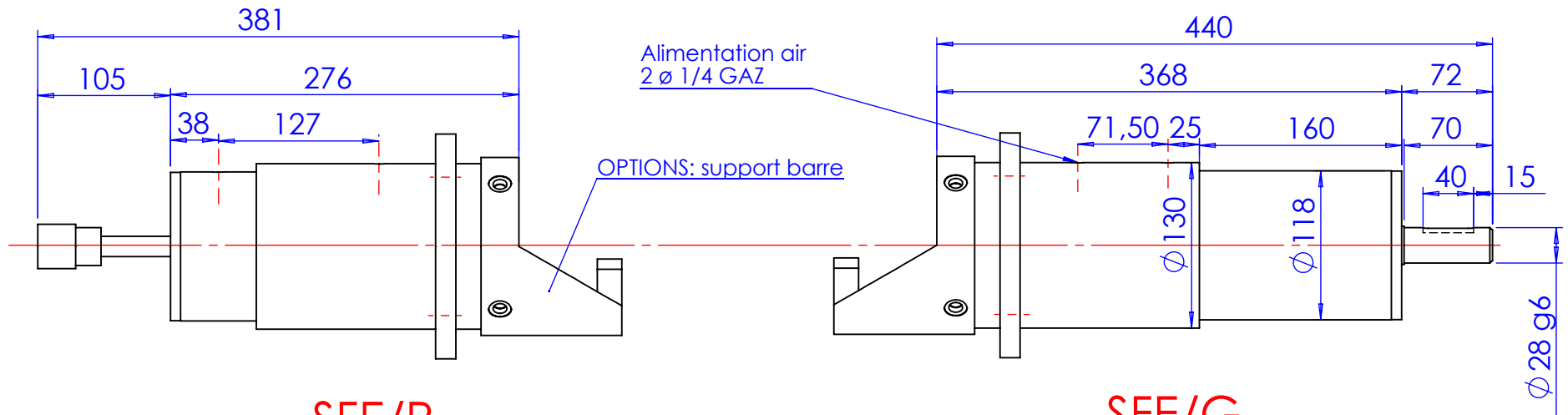


**PALIER SANS TRANSLATION  
SERIE 2000 20/30**

**MBC**  
*Guttin*

Poids bobine : 8000 N

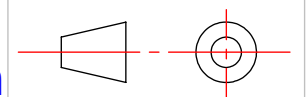




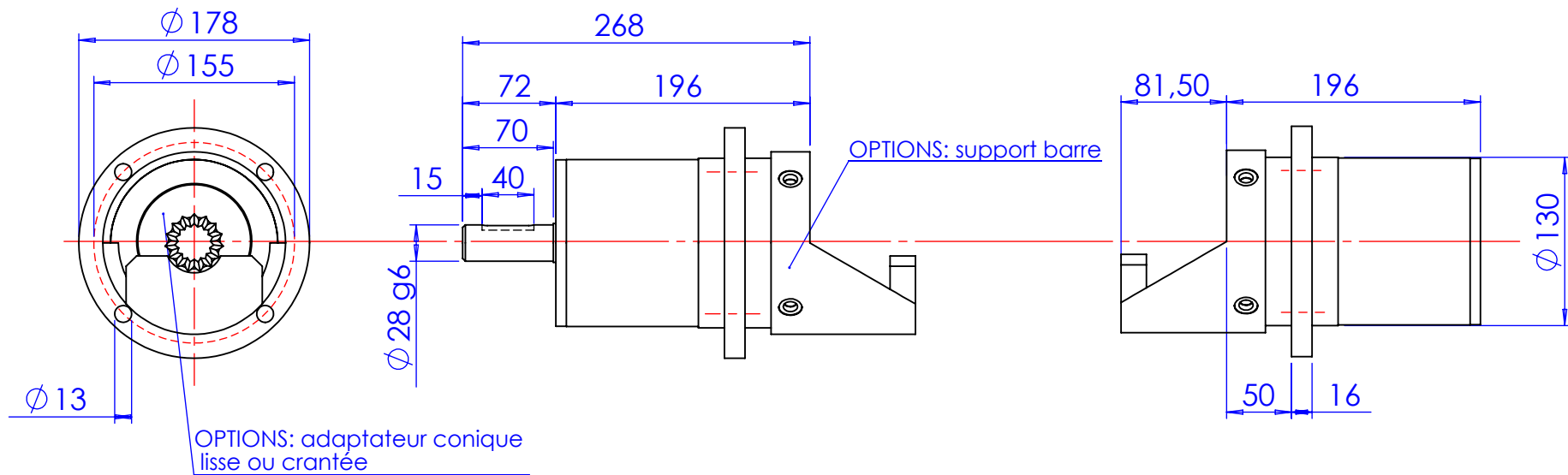
**PALIER PNEUMATIQUE  
SERIE 2100 20/30  
COURSE 60**

**Poids bobine : 8000 N  
Disponible en course 100 mm**

*MBC  
Guttin*

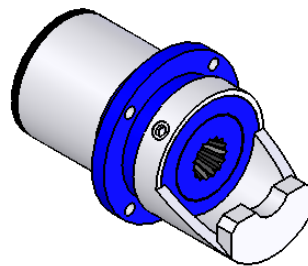
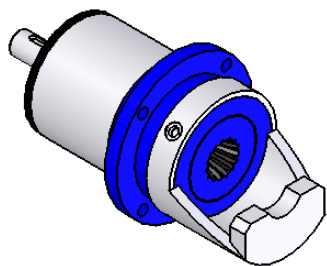






SFE/STG

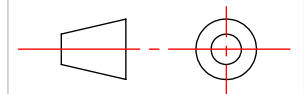
SFE/ST

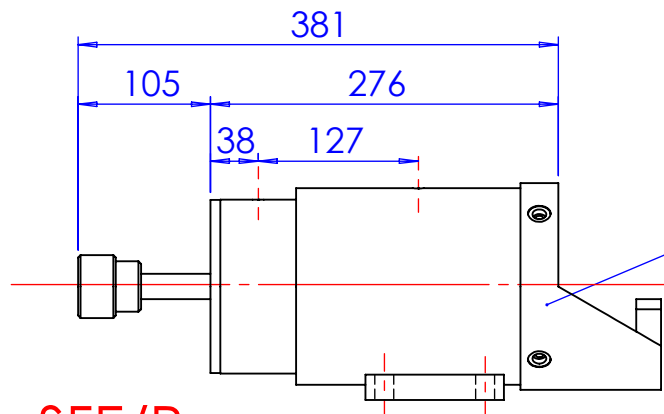


**PALIER SANS TRANSLATION  
SERIE 2100 20/30**

*MBC  
Guttin*

Poids bobine : 8000 N

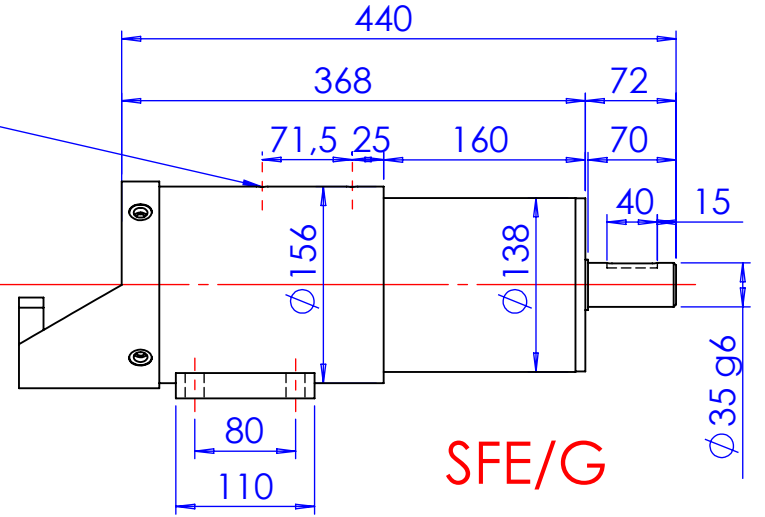




**SFE/R**

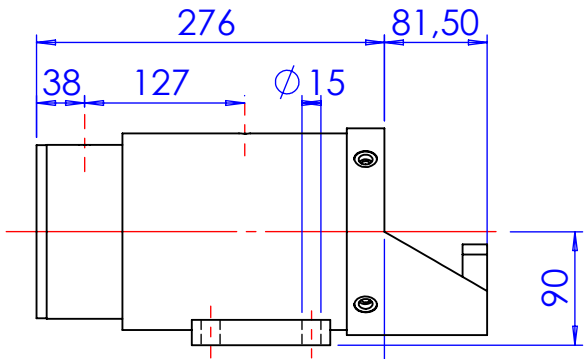
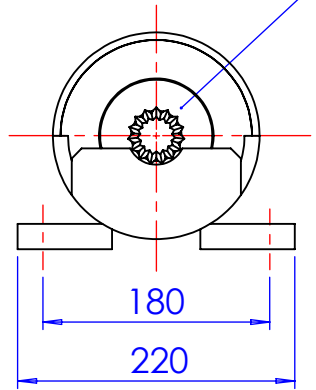
OPTIONS: support barre

Alimentation air  
2 ø 1/4 GAz

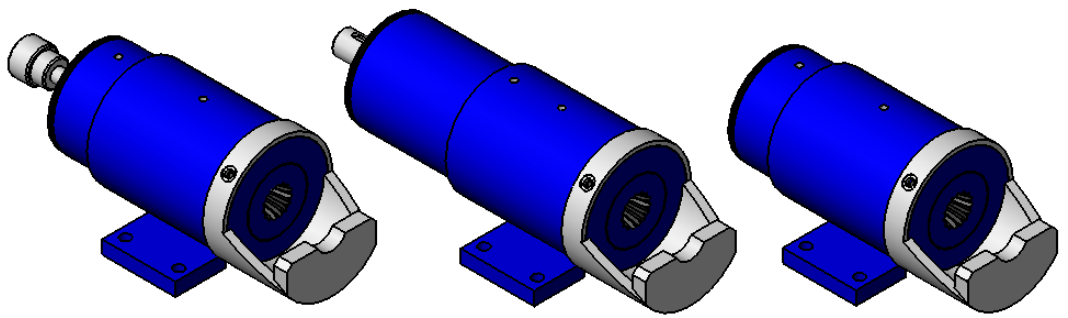


**SFE/G**

OPTIONS: adaptateur conique  
lisse ou crantée



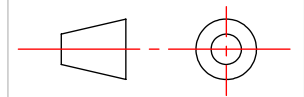
**SFE**



**PALIER PNEUMATIQUE  
SERIE 2000 30/40  
COURSE 60mm**

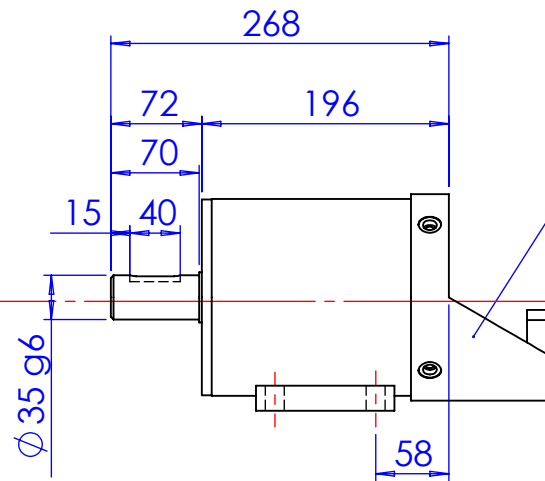
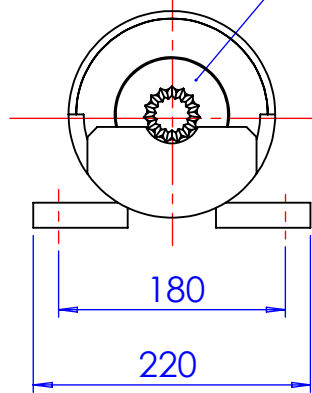
**Poids bobine : 16000 N  
Disponible en course 100 mm**

**MBC  
Guttin**



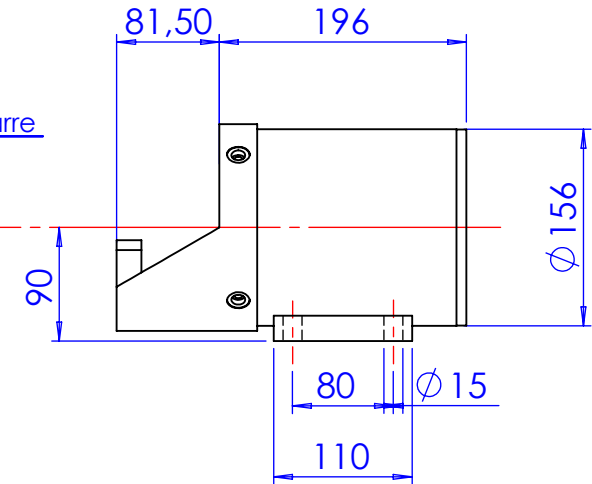


OPTIONS: adaptateur conique  
lisse ou crantée

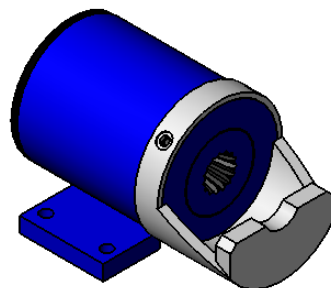
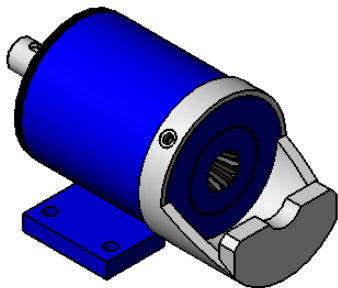


SFE/STG

OPTIONS: support barre



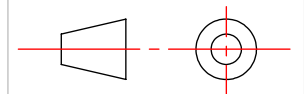
SFE/ST

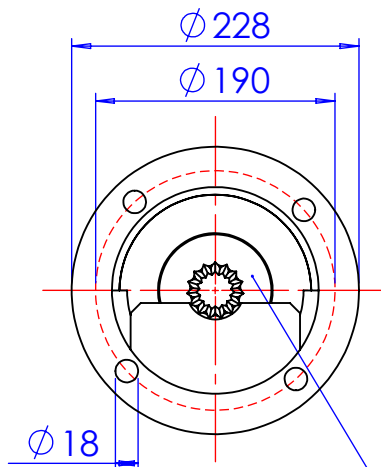
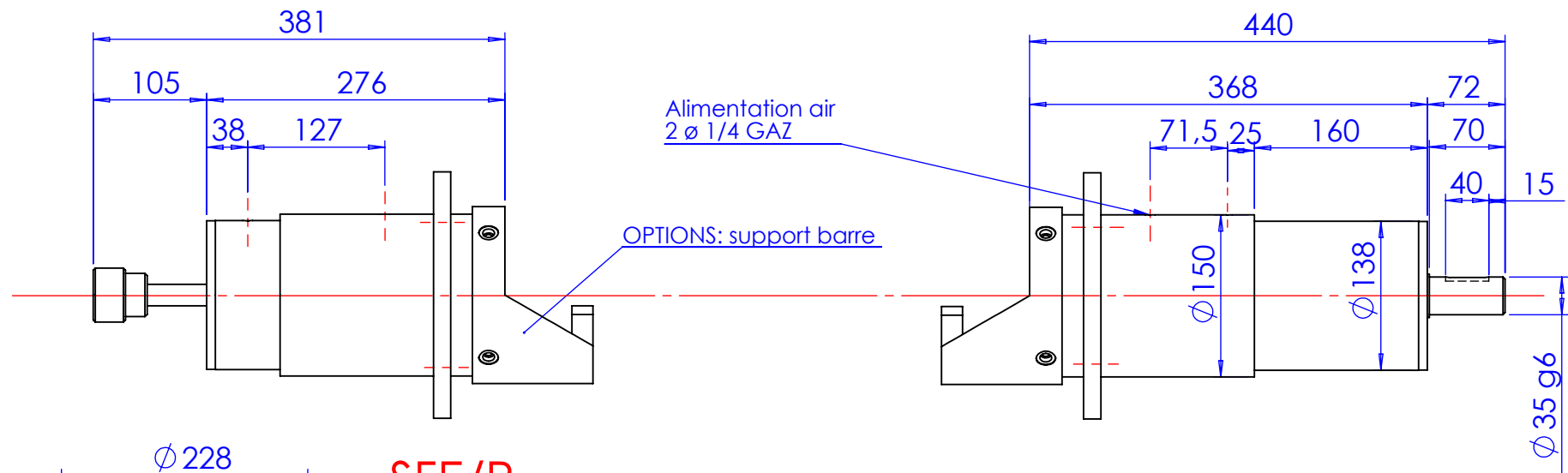


**PALIER SANS TRANSLATION  
SERIE 2000 30/40**

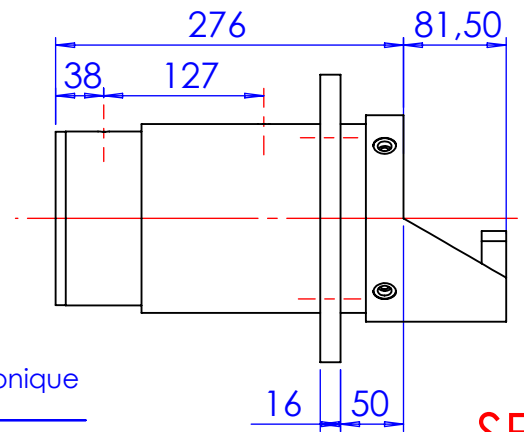
Poids bobine : 16000N

*MBC  
Guttin*



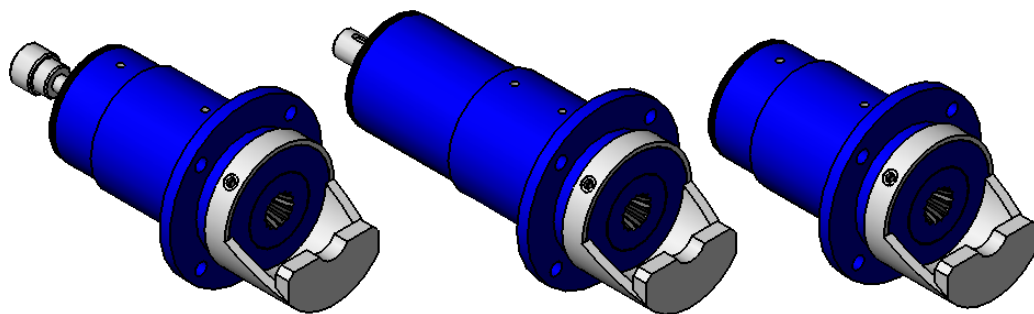


SFE/R



SFE

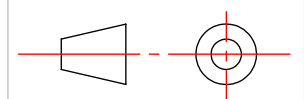
SFE/G

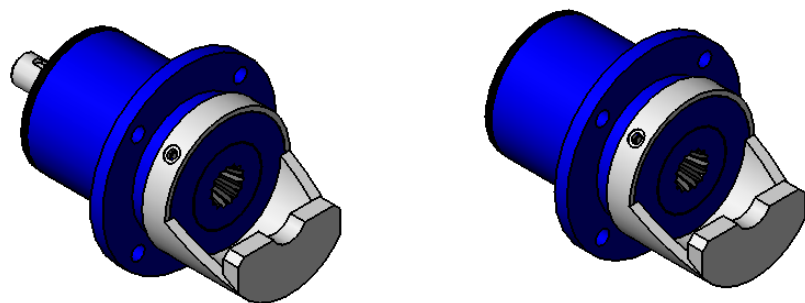
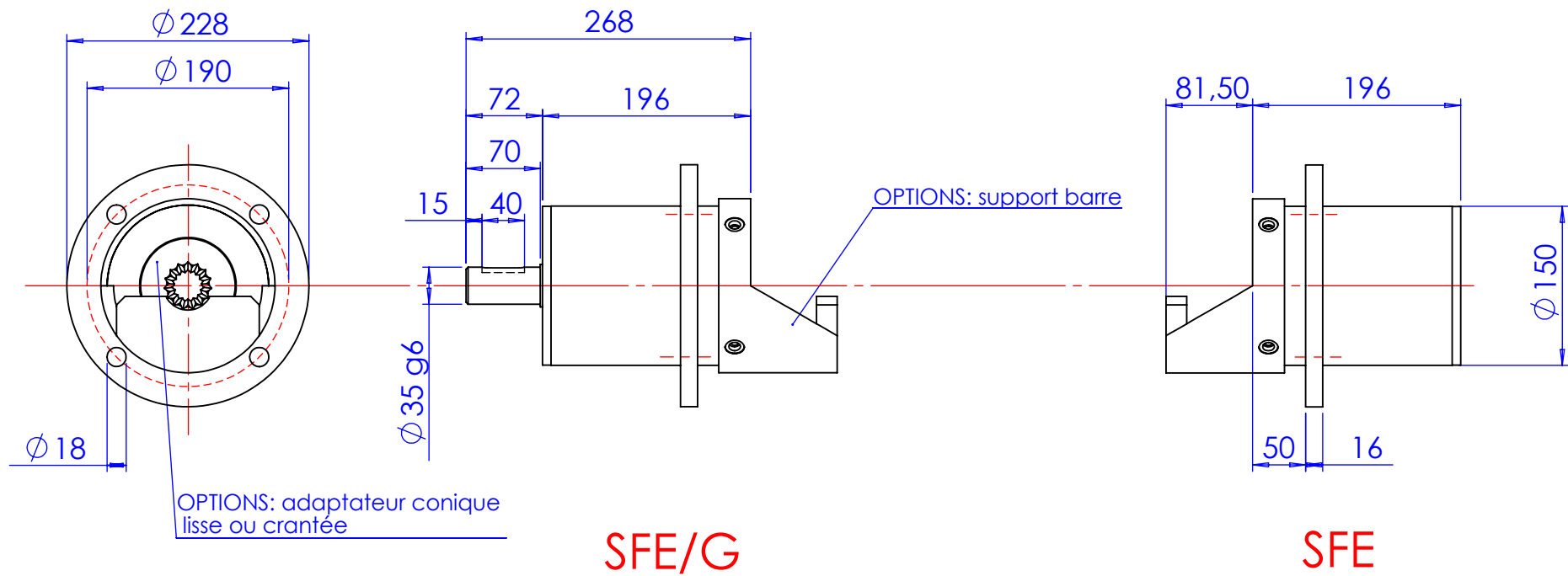


**PALIER PNEUMATIQUE  
SERIE 2100 30/40  
COURSE 60mm**

**Poids bobine : 16000 N  
disponible en course 100 mm**

*MBC  
Guttin*

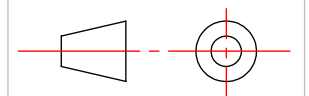


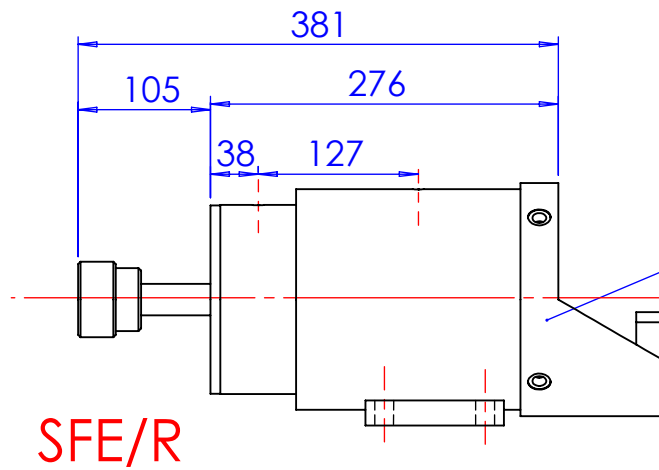


**PALIER SANS TRANSLATION  
SERIE 2100 30/40**

*MBC  
Guttin*

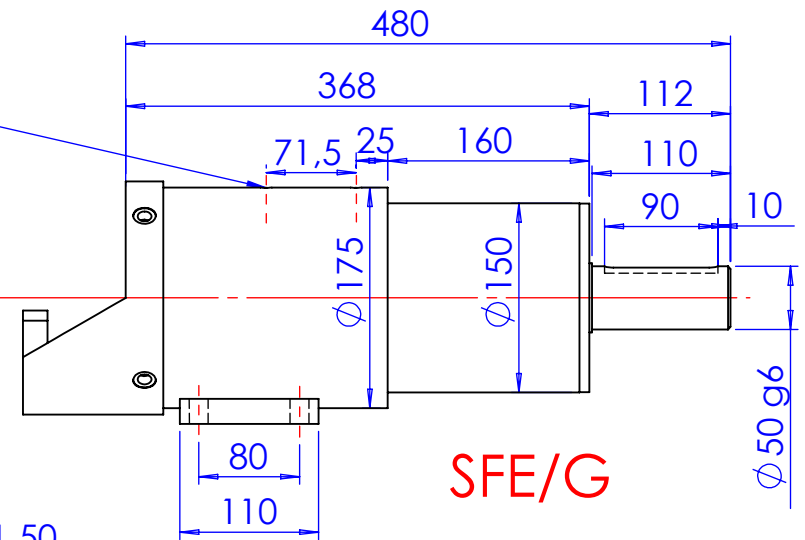
Poids bobine : 16000 N



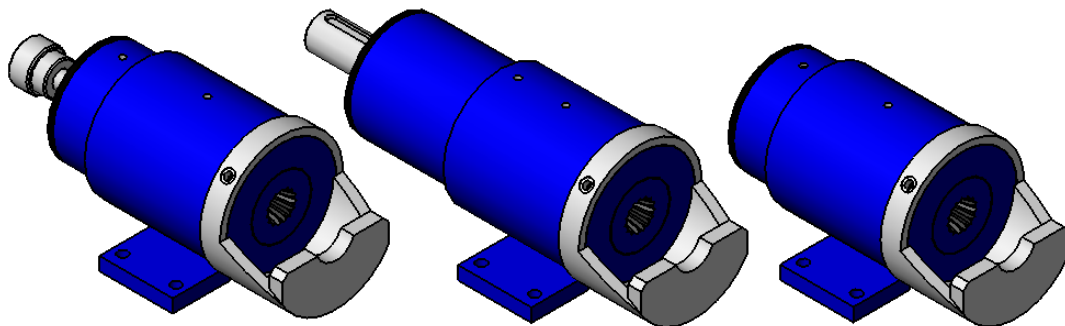
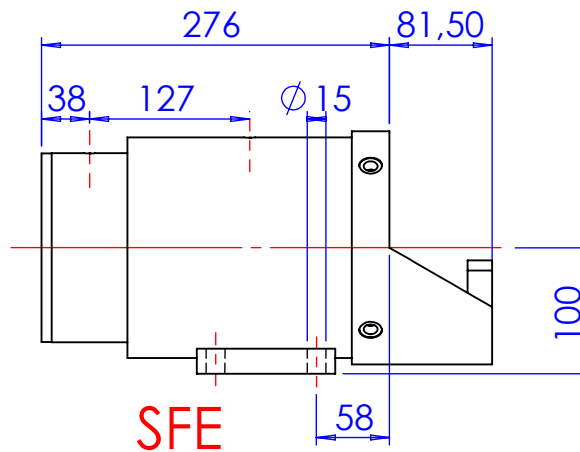
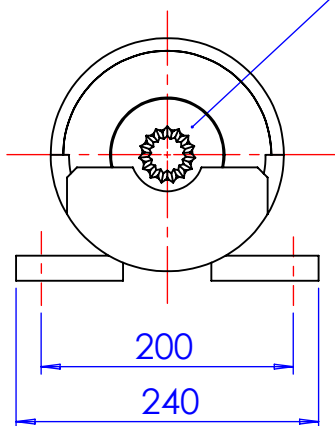


Alimentation air  
2  $\varnothing$  1/4 GAz

OPTIONS: support barre



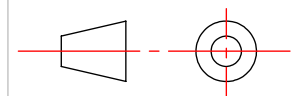
OPTIONS: adaptateur conique  
lisse ou crantée



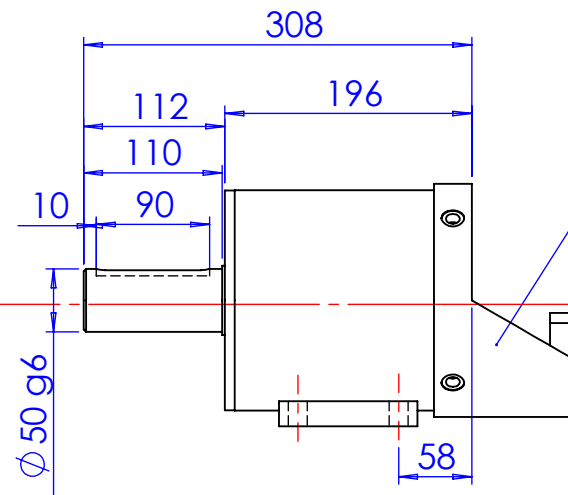
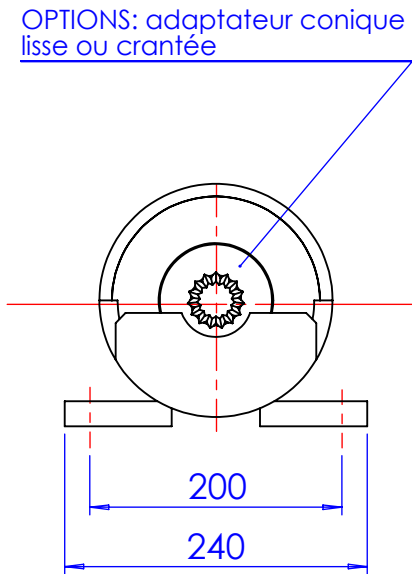
**PALIER PNEUMATIQUE  
SERIE 2000 40/50  
COURSE 60mm**

**Poids bobine : 28500 N  
Disponible en course 100 mm**

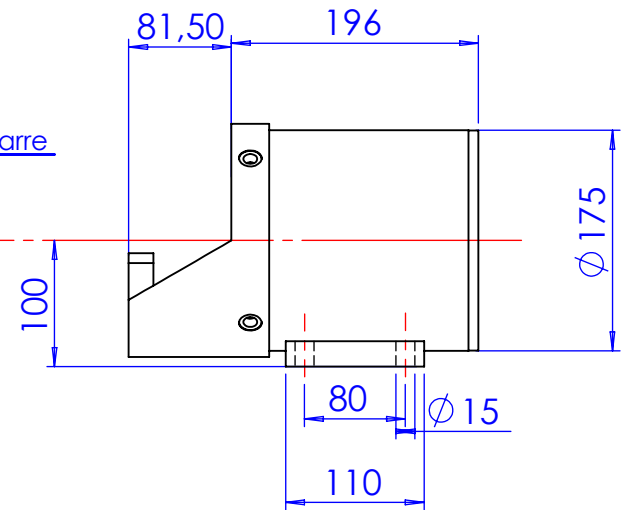
*MBC  
Guttin*



OPTIONS: adaptateur conique  
lisse ou crantée

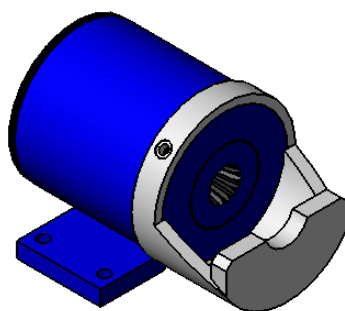
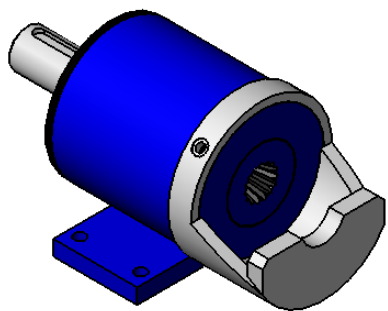


OPTIONS: support barre



SFE/STG

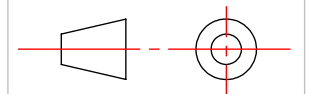
SFE/ST

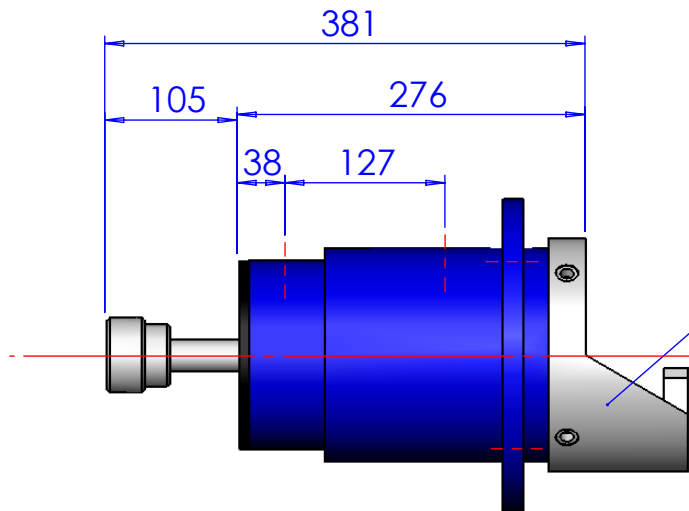


**PALIER SANS TRANSLATION  
SERIE 2000 40/50**

*MBC  
Guttin*

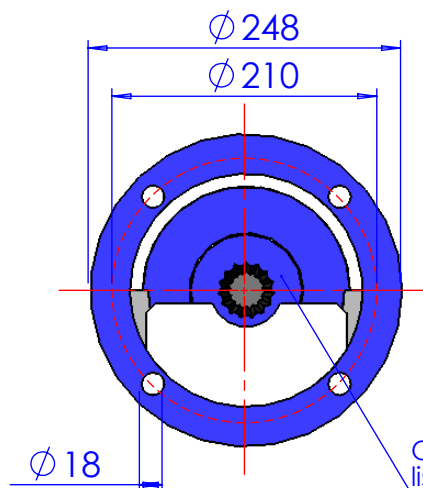
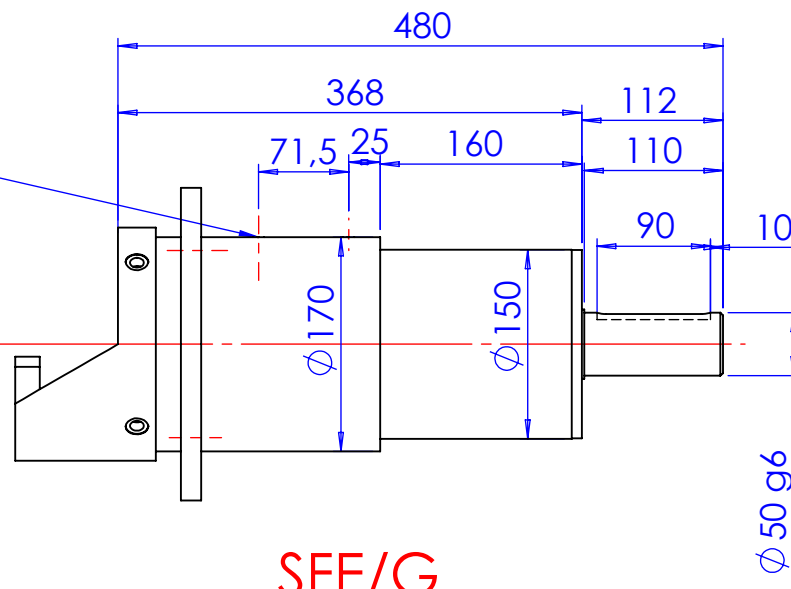
Poids bobine : 28500 N





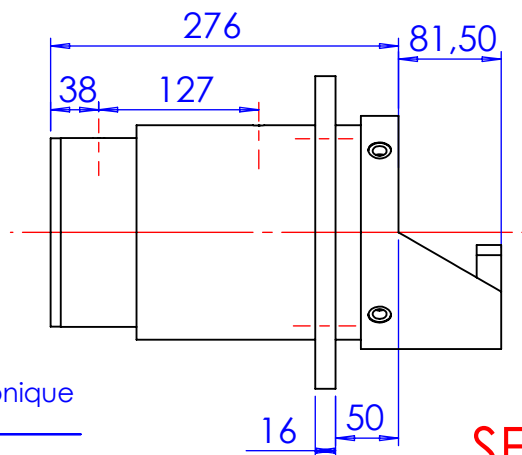
Alimentation air  
2  $\varnothing$  1/4 GAZ

OPTIONS: support barre



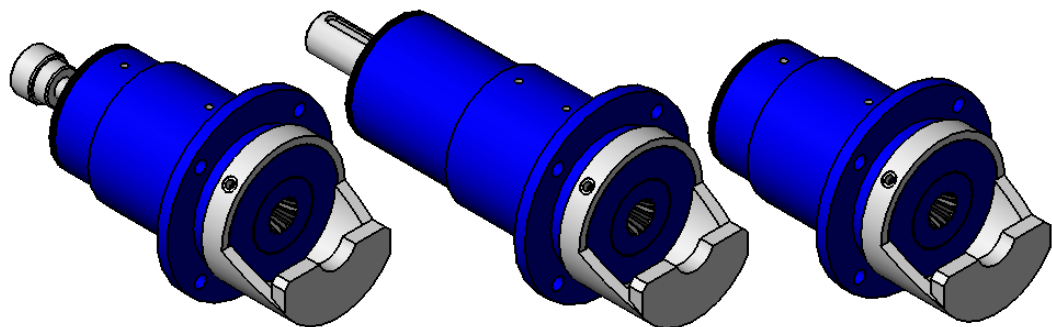
SFE/R

OPTIONS: adaptateur conique  
lisse ou crantée



SFE

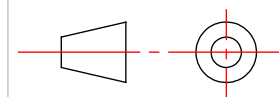
SFE/G



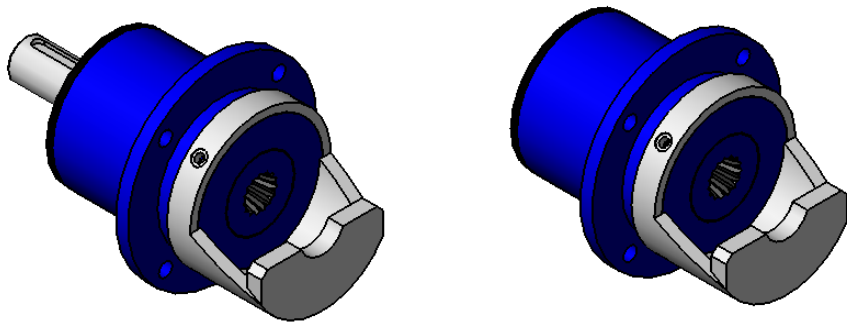
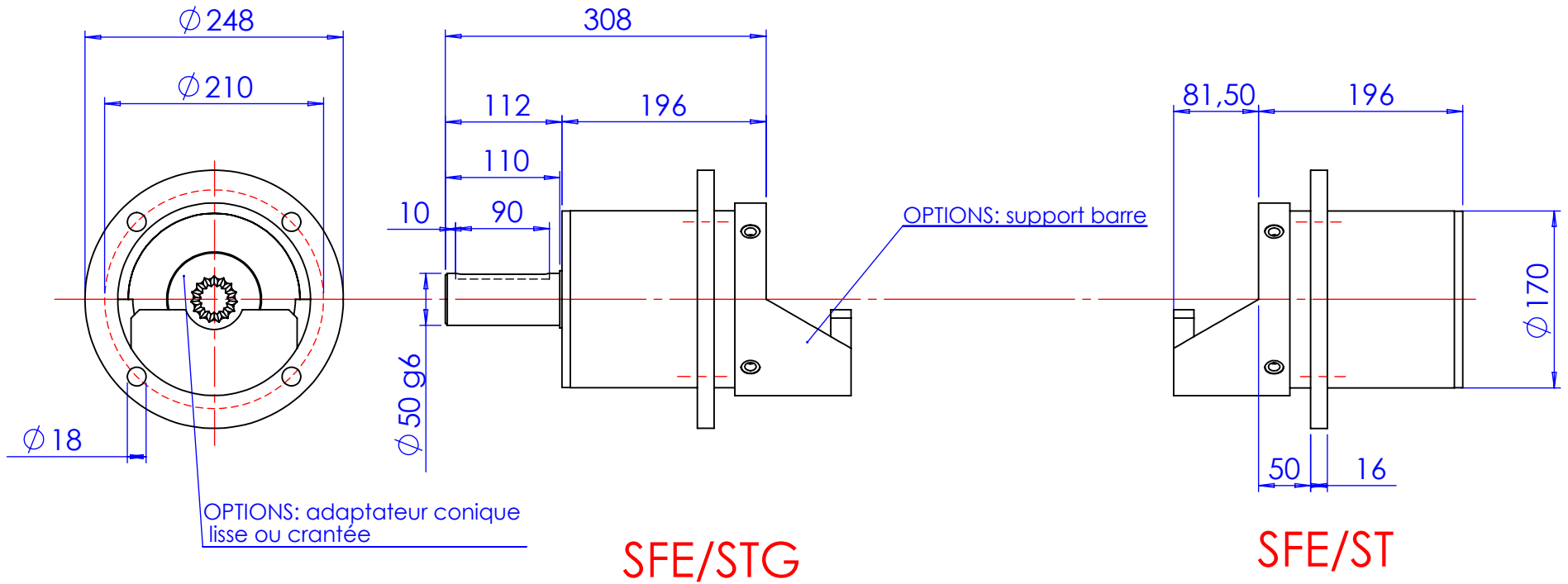
**PALIER PNEUMATIQUE**  
**SERIE 2100 40/50**  
**COURSE 60mm**

**Poids bobine : 28500 N**  
**Disponible en course 100 mm**

*MBC*  
*Guttin*



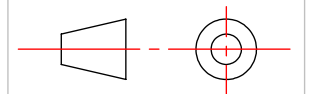


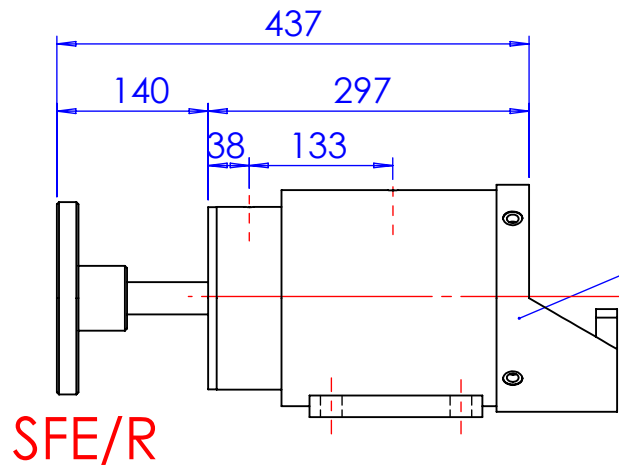


**PALIER SANS TRANSLATION  
SERIE 2100 40/50**

*MBC  
Guttin*

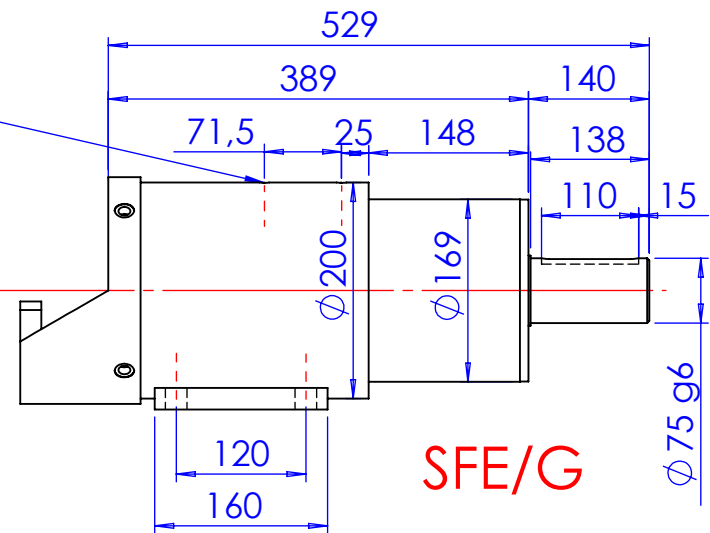
Poids bobine : 28500 N



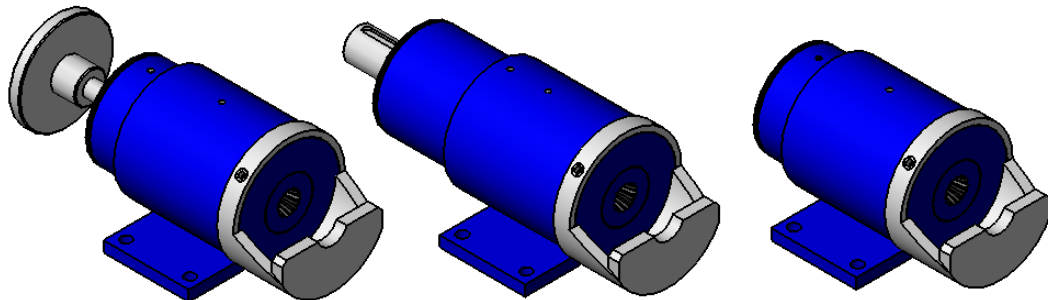
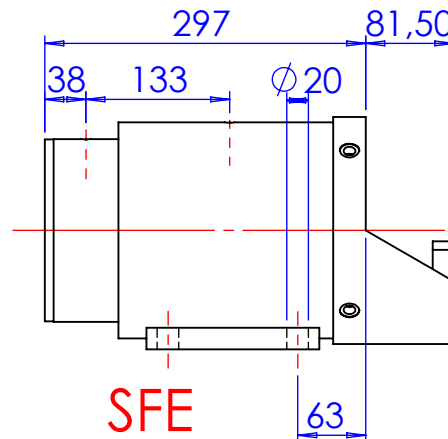
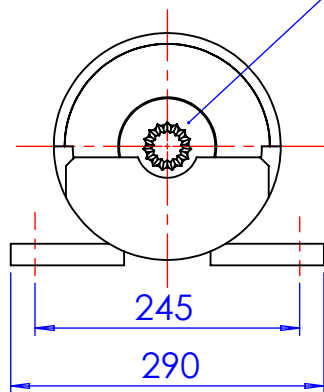


Alimentation air  
2  $\varnothing$  1/4 GAz

OPTIONS: support barre



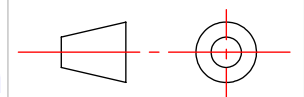
OPTIONS: adaptateur conique  
lisse ou crantée



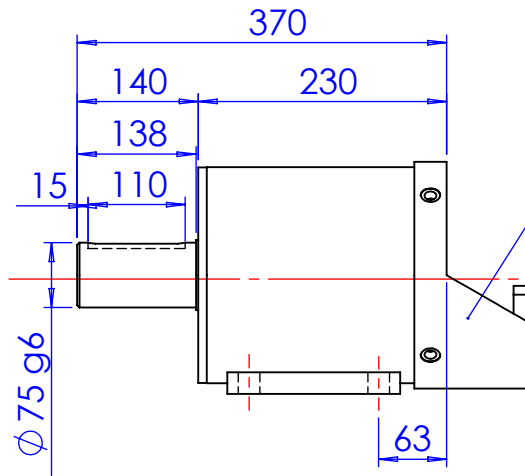
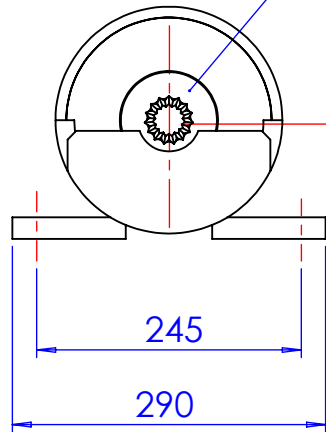
**PALIER PNEUMATIQUE  
SERIE 2000 50/80  
COURSE 60mm**

**Poids bobine : 72000 N  
Disponible en course 100 mm**

*MBC  
Guttin*

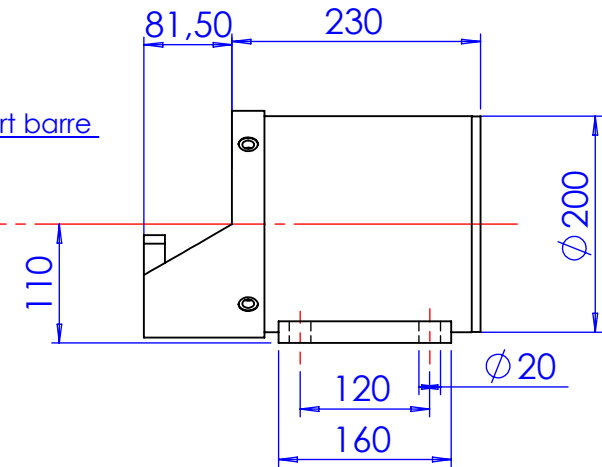


OPTIONS: adaptateur conique  
lisse ou crantée

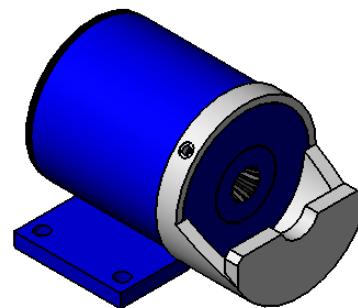
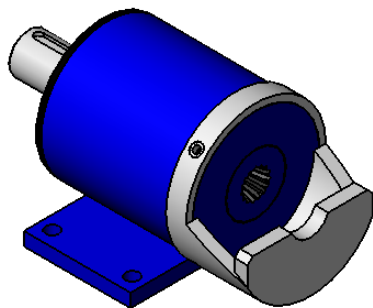


SFE/STG

OPTIONS: support barre



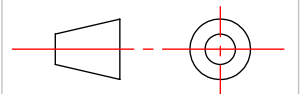
SFE/ST

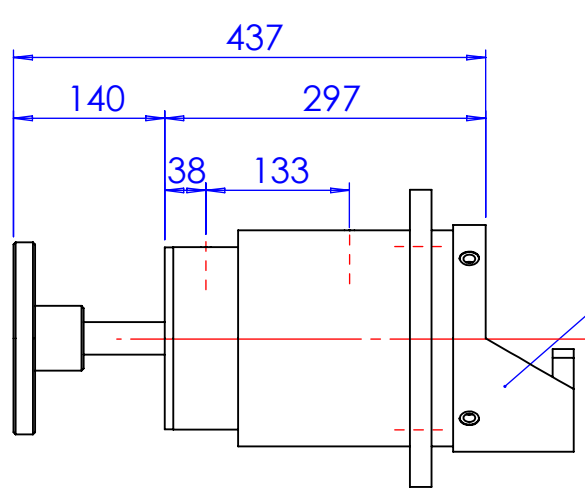


**PALIER SANS TRANSLATION  
SERIE 2000 50/80**

Poids bobine : 72000 N

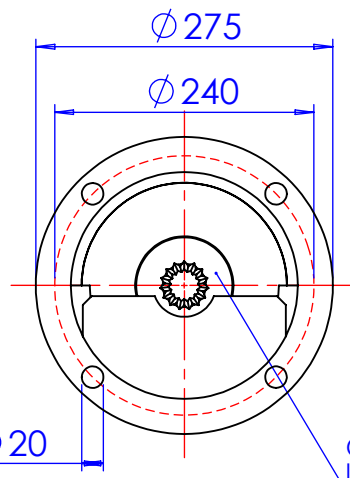
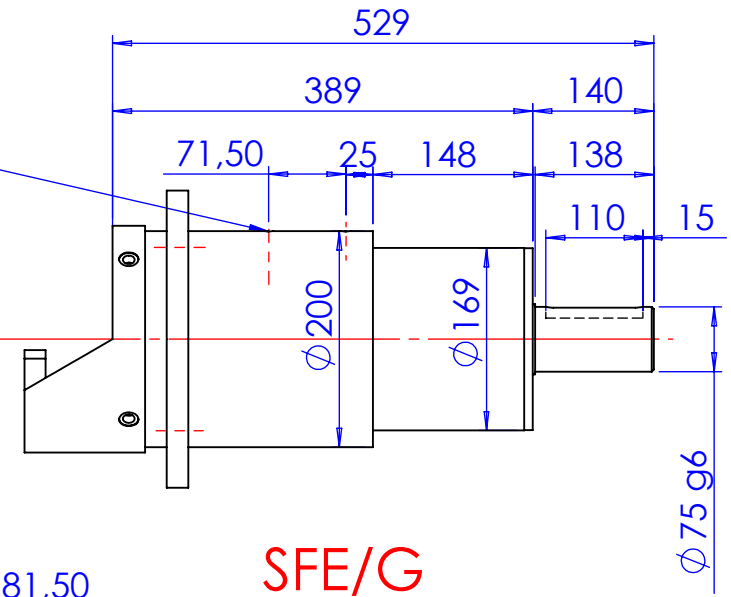
*MBC  
Guttin*





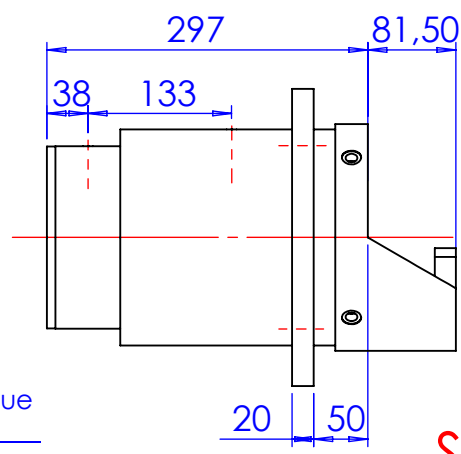
Alimentation air  
2 ø 1/4 GAZ

OPTIONS: support barre



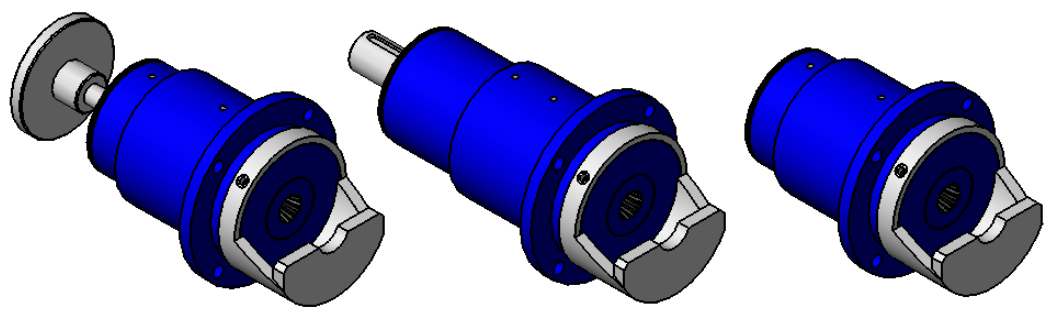
SFE/R

OPTIONS: adaptateur conique  
lisse ou crantée



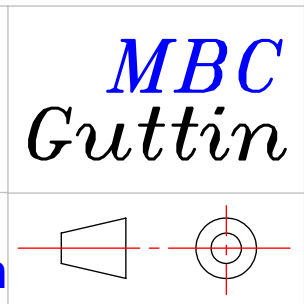
SFE/G

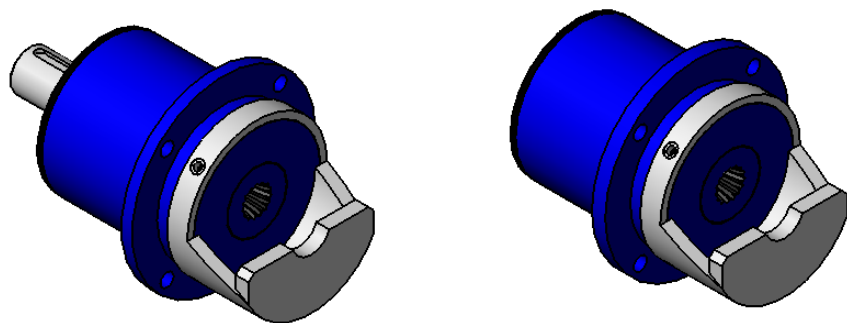
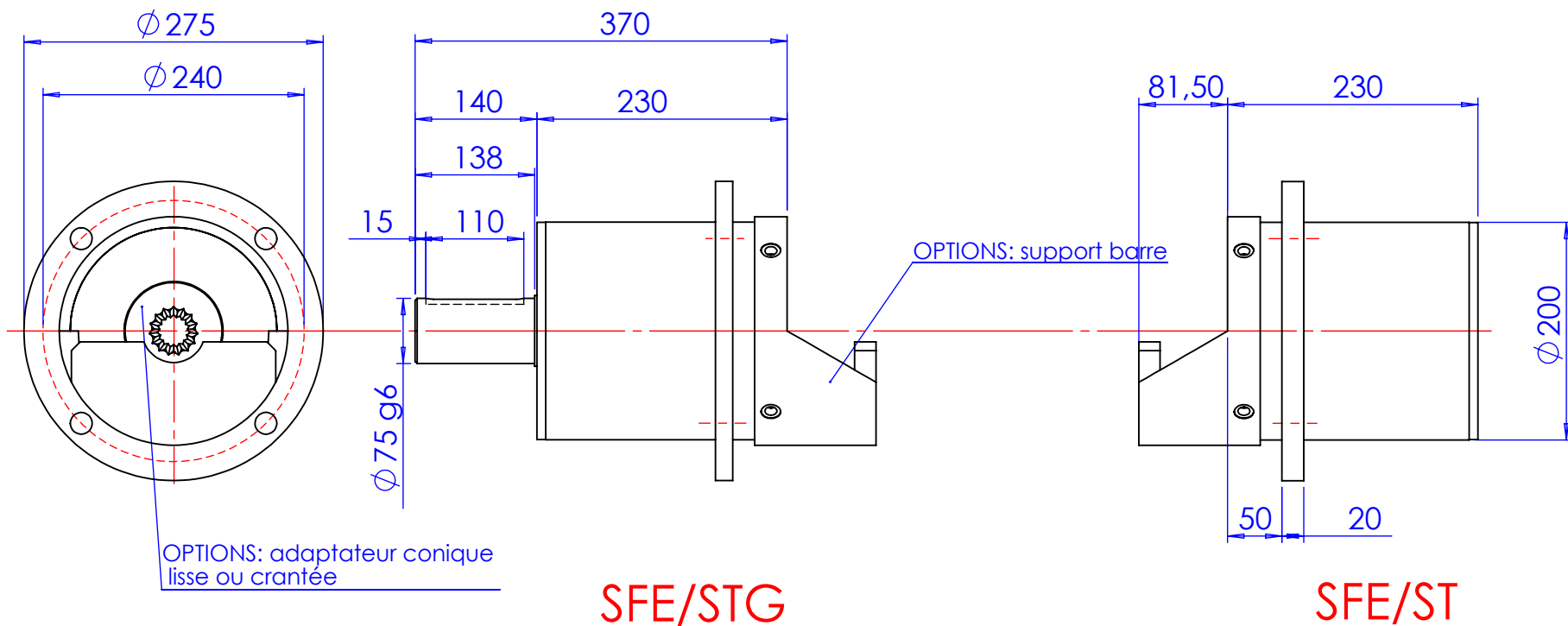
SFE



**PALIER PNEUMATIQUE  
SERIE 2100 50/80  
COURSE 60mm**

**Poids bobine : 72000 N  
Disponible en course 100 mm**

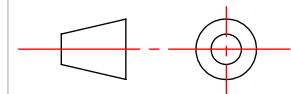




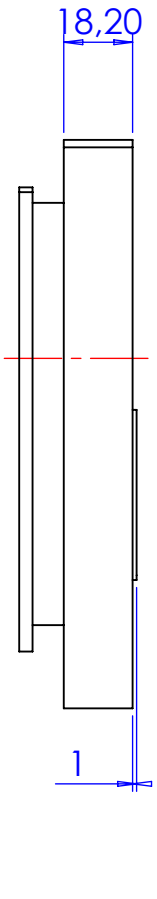
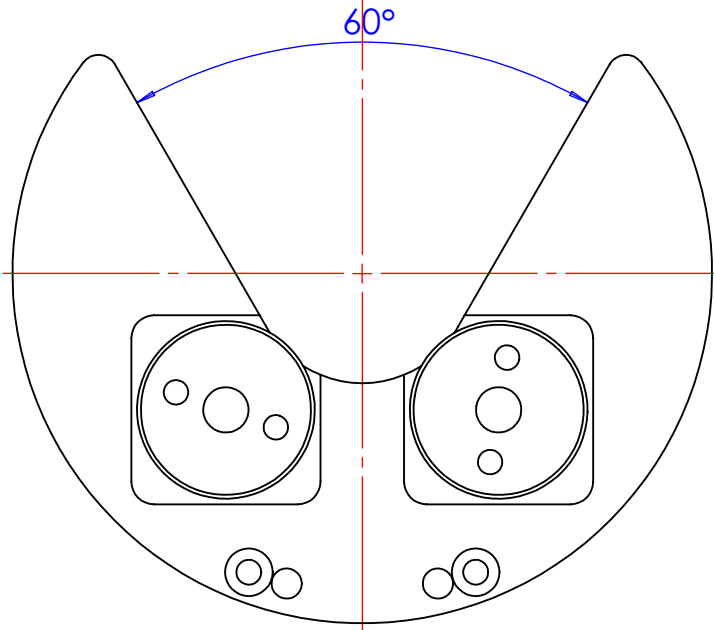
**PALIER SANS TRANSLATION  
SERIE 2100 50/80**

*MBC  
Guttin*

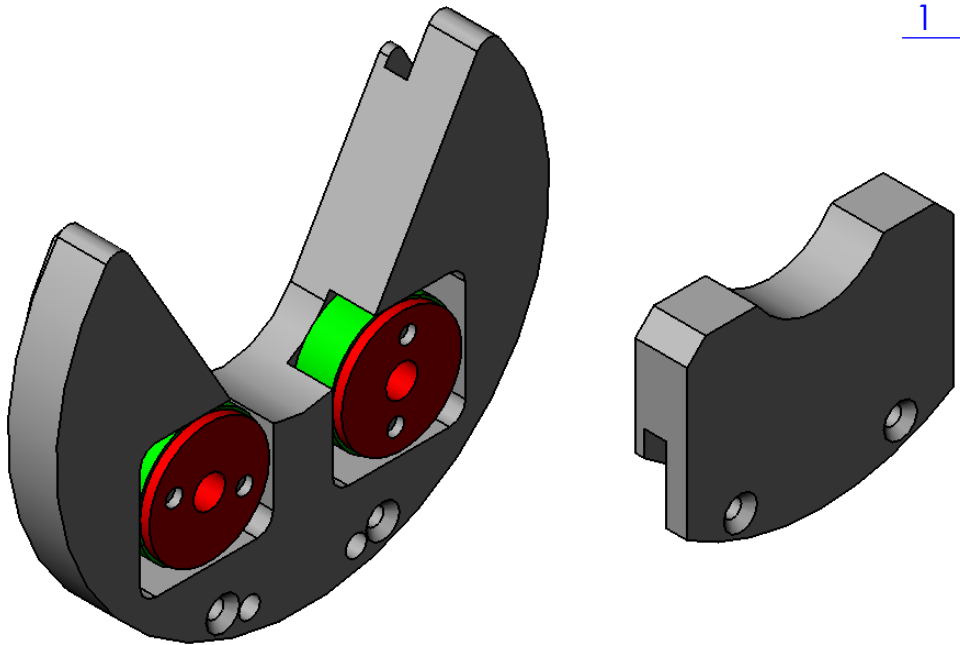
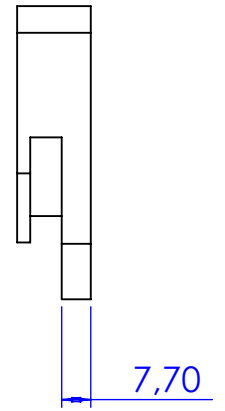
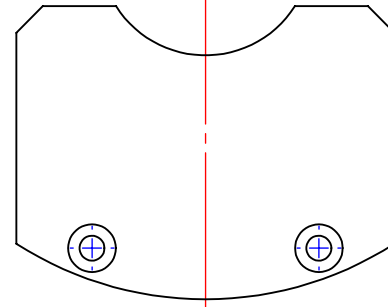
Poids bobine : 72000 N



**SUPPORT BARRE TYPE 2**



**SUPPORT BARRE TYPE 1**



Ensemble: **SUPPORT BARRE TYPE 1 ET 2 40/50**

Titre:

Matière:	Tolérances générales: ISO 2768 mK Etat de surface général: 1,6	Nb:
Echelle:	Ce plan est la propriété de MBC GUTTIN. Il ne peut être reproduit et/ou communiqué sans autorisation.	GUTTIN Fabrice
	This document belong to MBC GUTTIN. It cannot be reproduced and/or transmitted without authorisation.	Date: 14/12/15



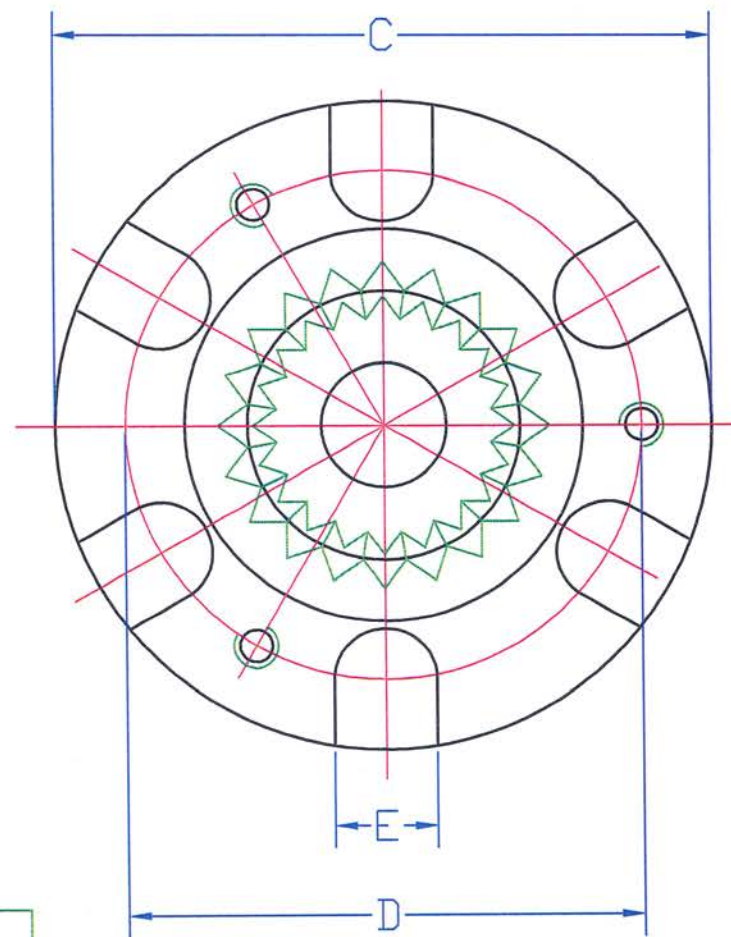
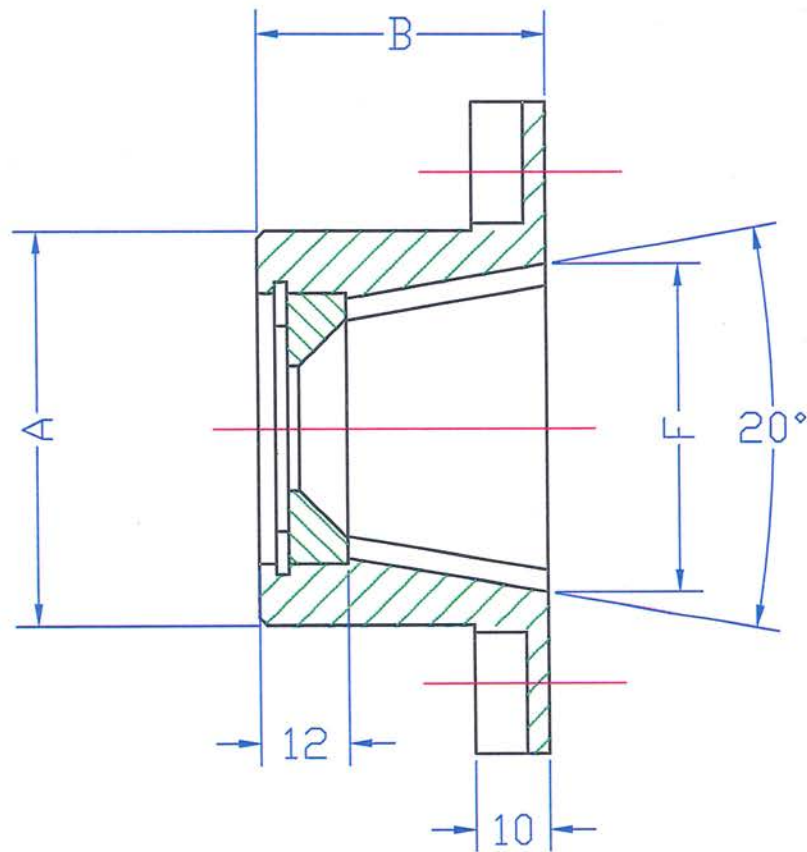
Client :	Langue:
	Fr



MABC

**Adaptateurs pour paliers**  
**Série 2000 – 2100**

MABC



PALIER	20/30	30/40	40/50	50/80
COTE A	∅ 54	∅ 54	∅ 62	∅ 62
COTE B	39	39	39	39
COTE C	∅ 77	∅ 89	∅ 89	∅ 99
COTE D	∅ 65	∅ 70	∅ 76	∅ 80
COTE E	11	14	14	14
COTE F	∅ 45	∅ 45	∅ 55	∅ 55
Nbre DENTS	20 DENTS	20 DENTS	24 DENTS	24 DENTS

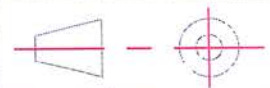
**PALIER SERIE 2000/2100**

TYPE 20/30-30/40-40/50-50/80

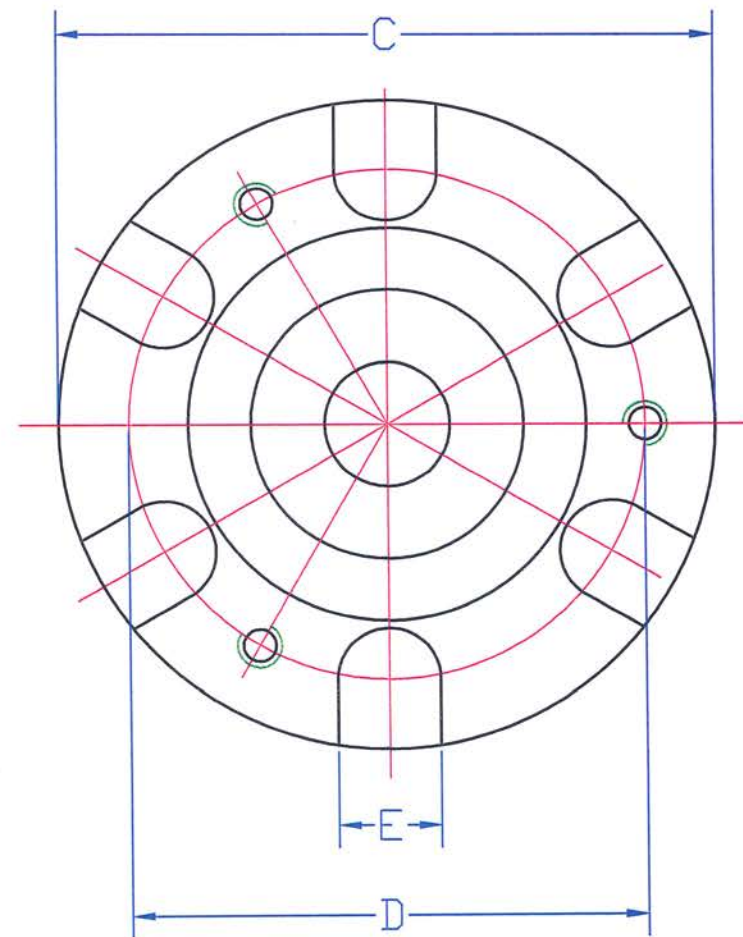
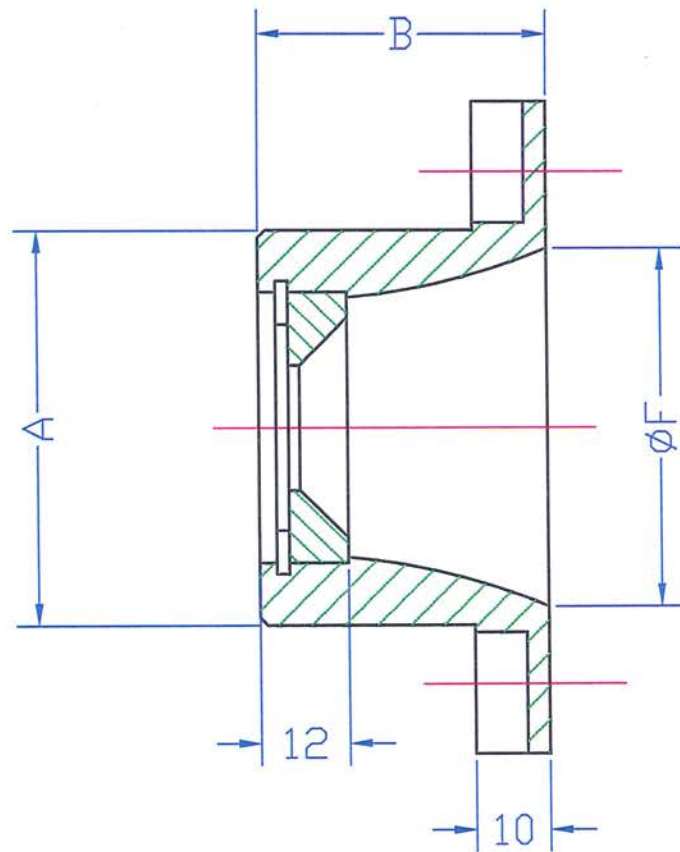
ADAPTATEUR CONIQUE

CRANTES FEMELLE

**MBC**  
*Guttin*







PALIER	20/30	30/40	40/50	50/80
COTE A	$\phi$ 54	$\phi$ 54	$\phi$ 62	$\phi$ 62
COTE B	39	39	39	39
COTE C	$\phi$ 77	$\phi$ 89	$\phi$ 89	$\phi$ 99
COTE D	$\phi$ 65	$\phi$ 70	$\phi$ 76	$\phi$ 80
COTE E	11	14	14	14
COTE F	$\phi$ 49	$\phi$ 49	$\phi$ 59	$\phi$ 59

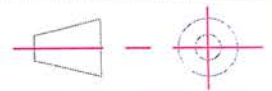
**PALIER SERIE 2000/2100**

TYPE 20/30-30/40-40/50-50/80

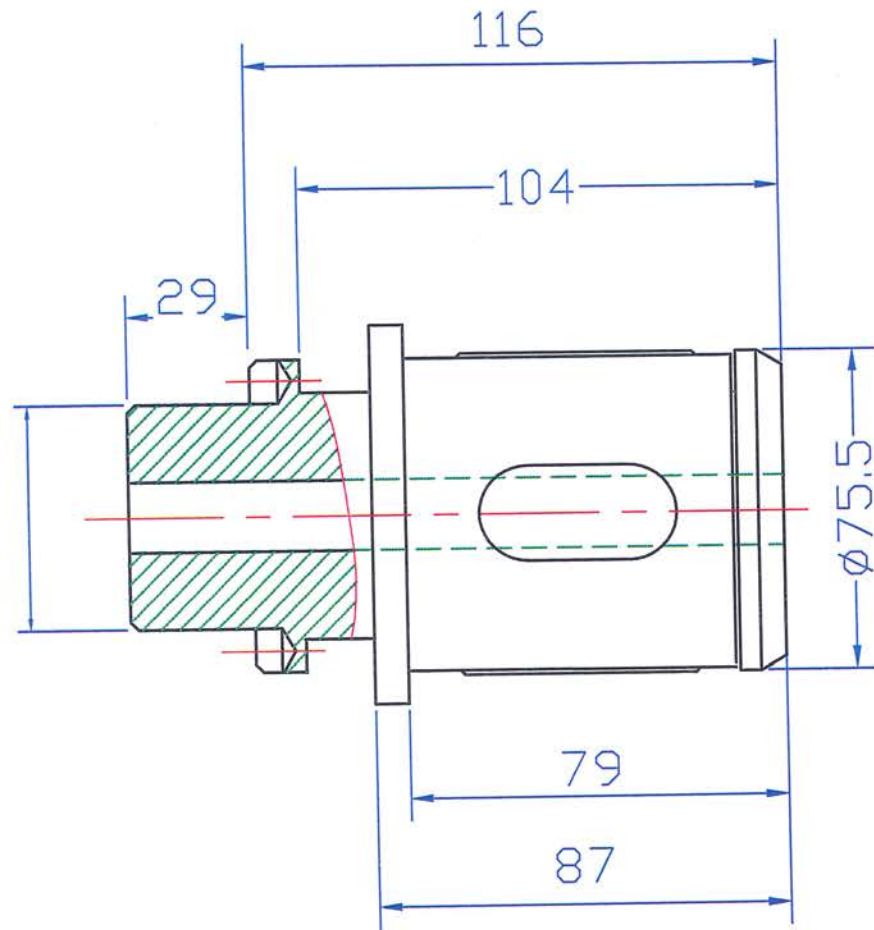
ADAPTATEUR CONIQUE

LISSE FEMELLE

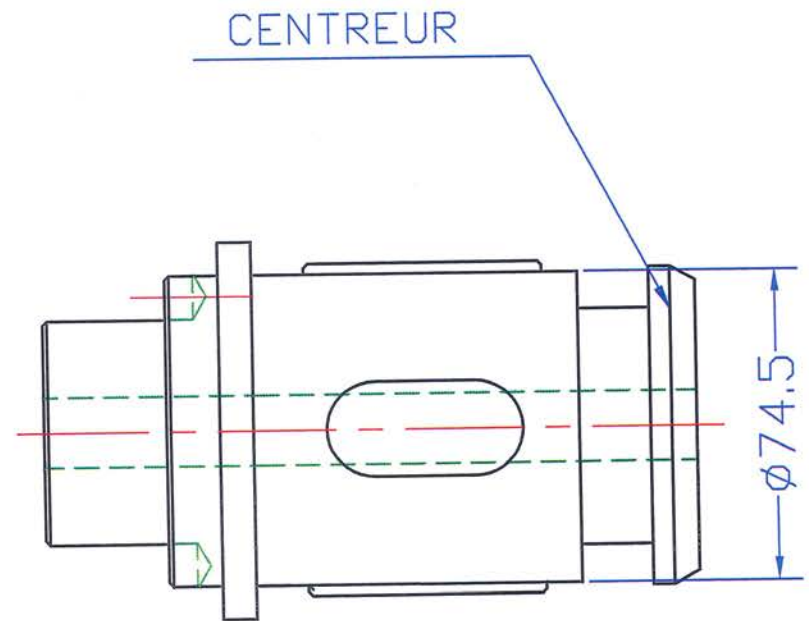
**MBC**  
Guttin



Ø62 PALIER 40/50-50/80  
 Ø54 PALIER 20/30-30/40



POSITION REPOS



POSITION TRAVAIL

Ø MINI TETE MECANIQUE = Ø68.5

**PALIER SERIE 2000/2100**

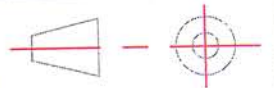
TYPE 20/30-30/40-40/50-50/80

TETE MECANIQUE A EXPANSION PAR

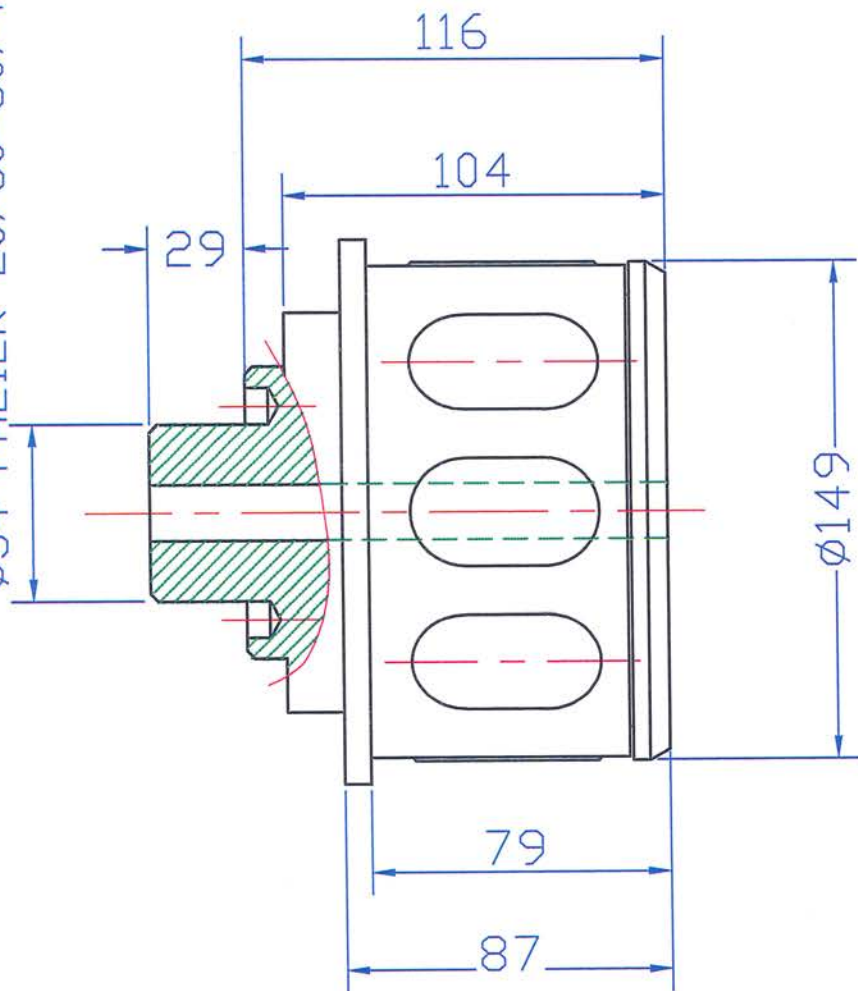
POUSSEE AXIAL AVEC CENTREUR

**MBC**

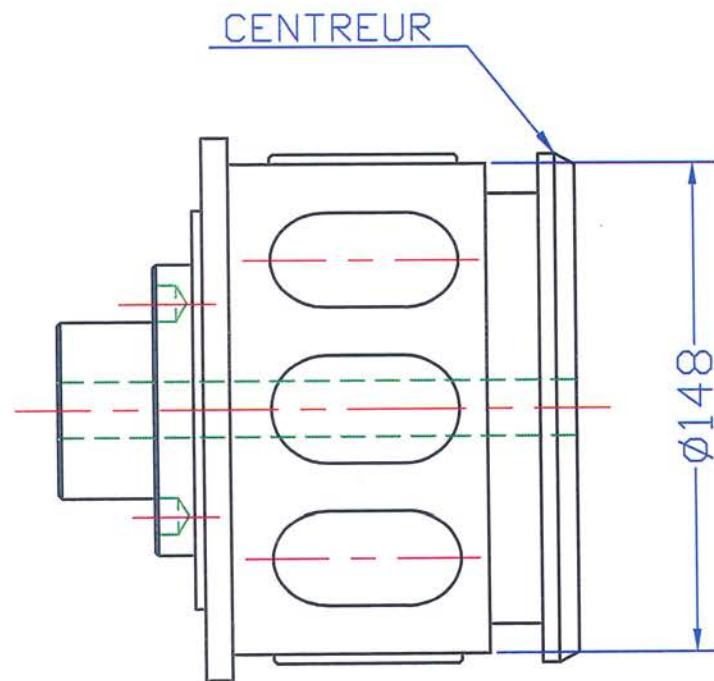
*Guttin*



Ø62 PALIER 40/50-50/80  
 Ø54 PALIER 20/30-30/40



POSITION REPOS



POSITION TRAVAIL

**PALIER SERIE 2000/2100**

TYPE 20/30-30/40-40/50-50/80

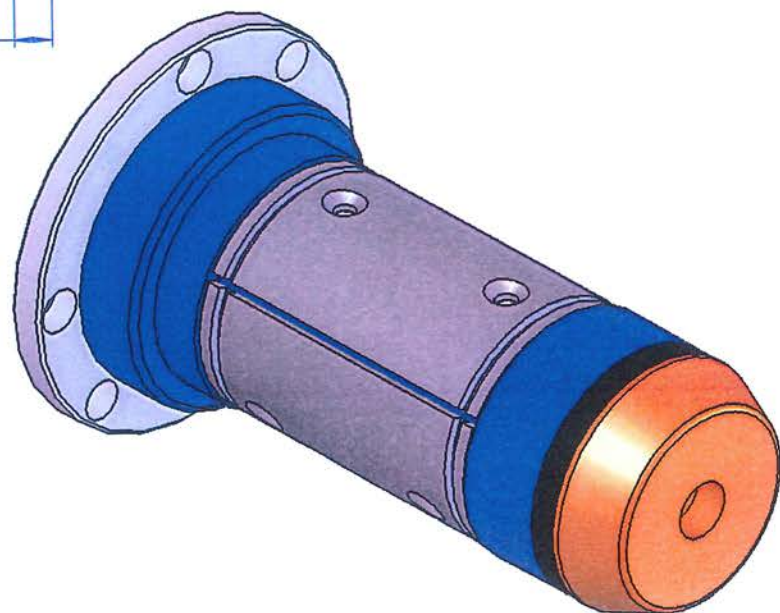
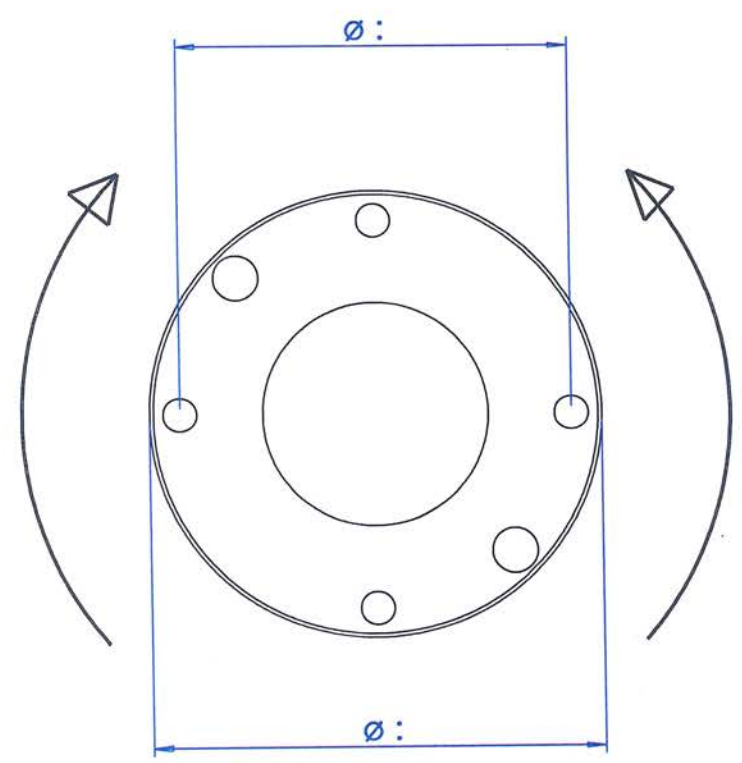
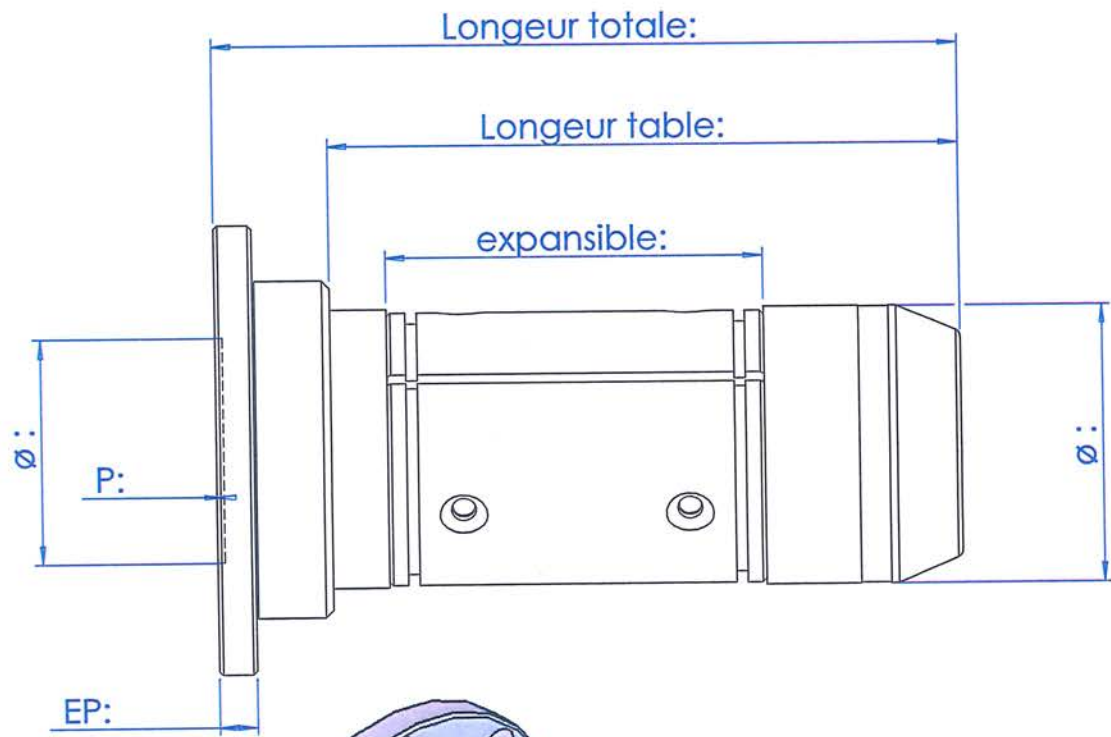
TETE MECANIQUE A EXPANSION PAR

POUSSEE AXIAL AVEC CENTREUR

**MBC**  
*Guttin*



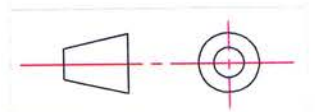




**TETE A PASSAGE DE COUPLE**

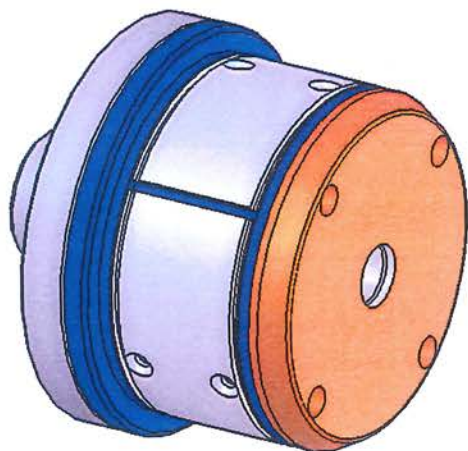
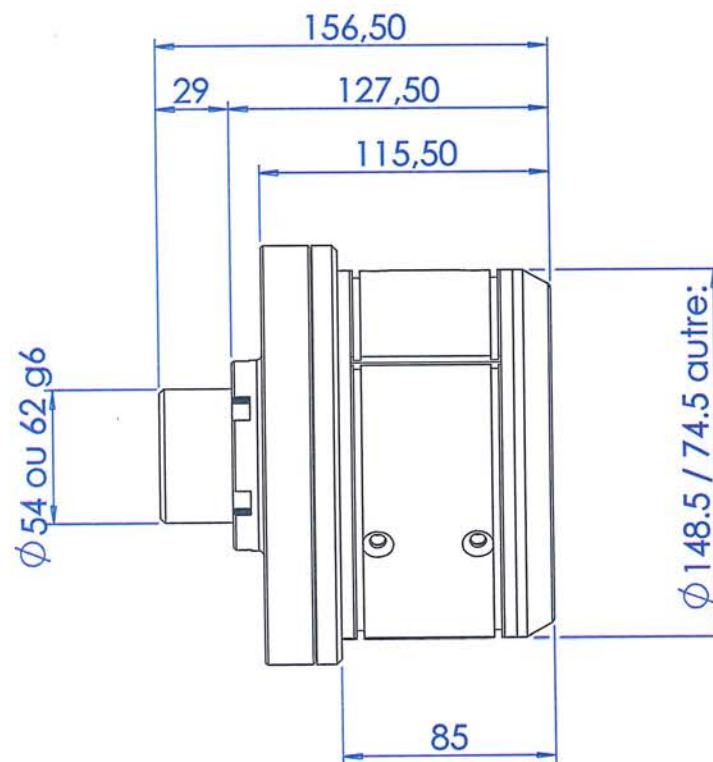
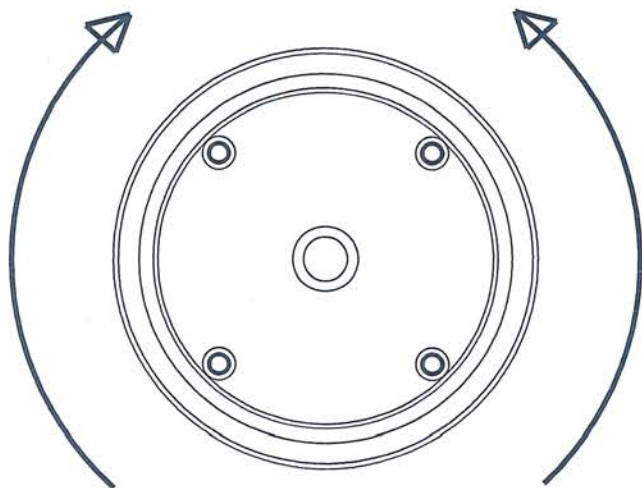
Double sens d'enroulage ou de déroulage

**MBC**  
*Guttin*





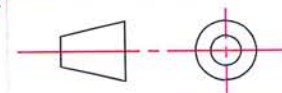
Sens d'enroulage

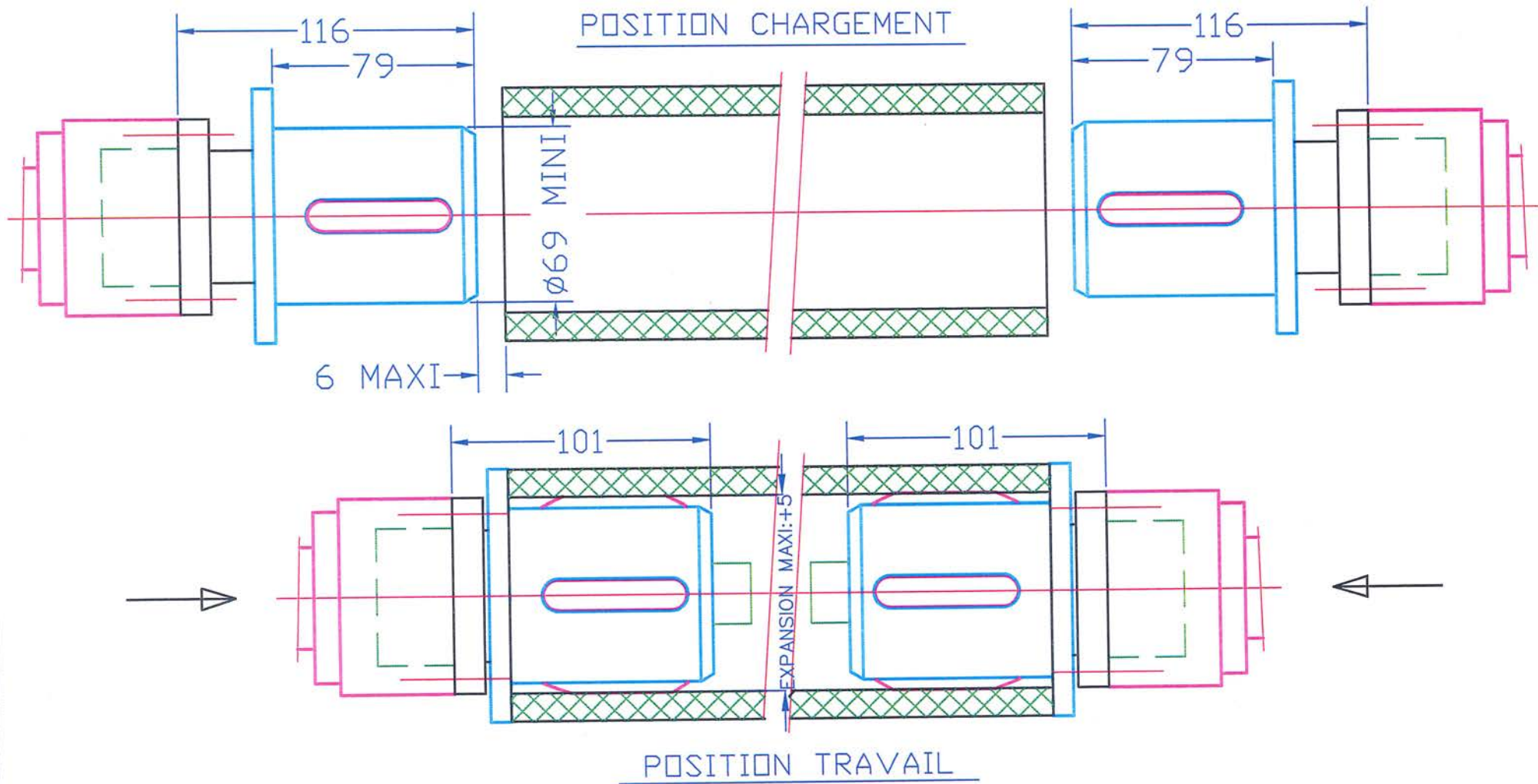


**PALIERs SERIE 2000 /2100**

Tete a passage de couple

**MBC**  
*Guttin*





AVEC PALIER COURSE 100

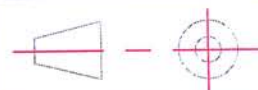
**PALIER SERIE 2000/2100**

TYPE 20/30-30/40-40/50-50/80

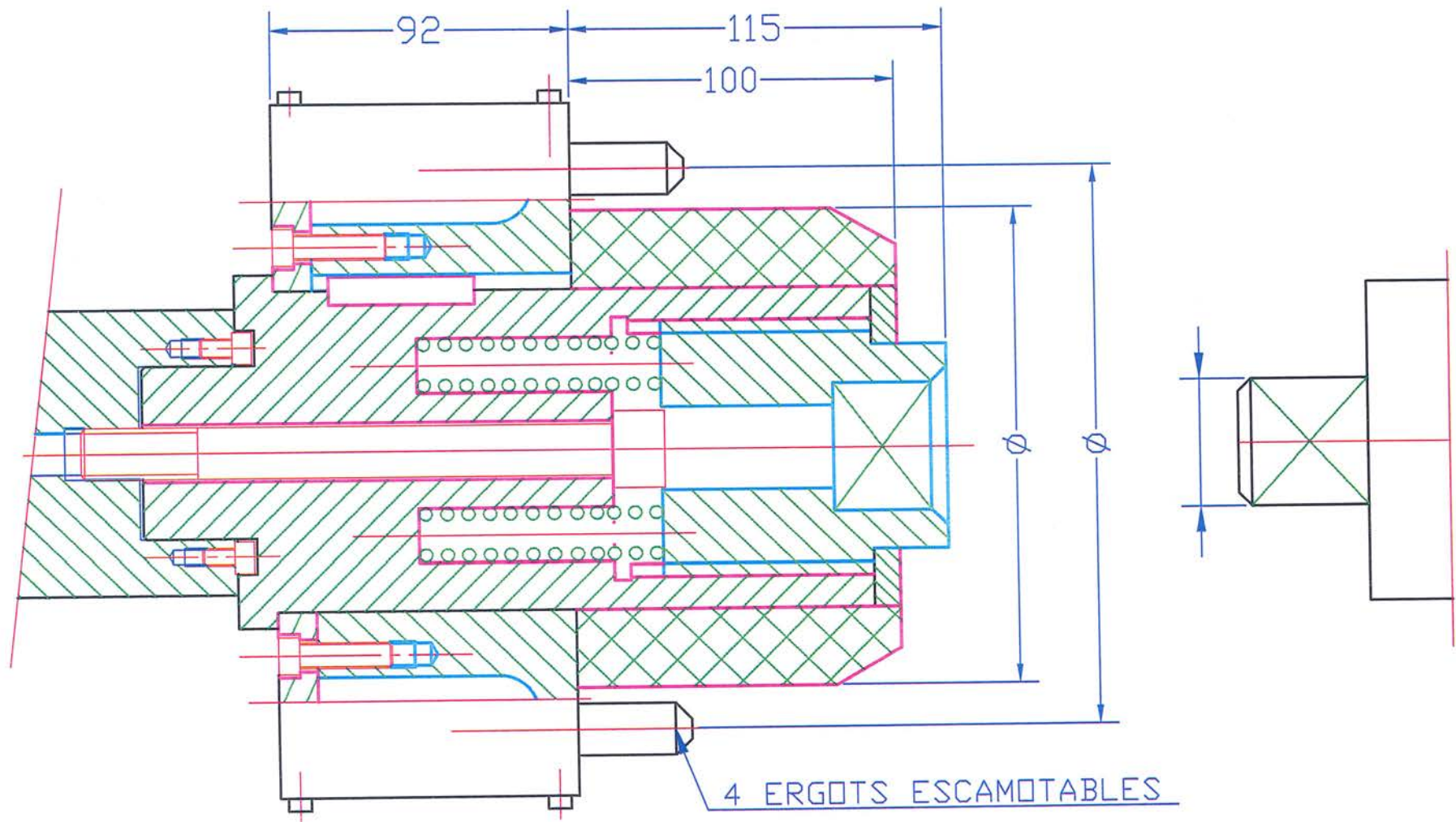
SCHEMA PRINCIPE TETE MECANIQUE

EXPANSION PAR POUSSEE AXIAL

**MBC**  
*Guttin*







ACCOUPLMENT AXIAL TELESCOPIQUE POUR TOUTES

GOMETRIES (BARRES EXPANSIBLES)

ERGOTS ESCAMOTABLES POUR ENTRAINEMENT DIRECT

CENTRAGE PAR ALESAGE DU MANDRIN

**PALIER SERIE 2000/2100**

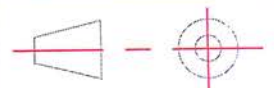
TYPE 20/30-30/40-40/50-50/80

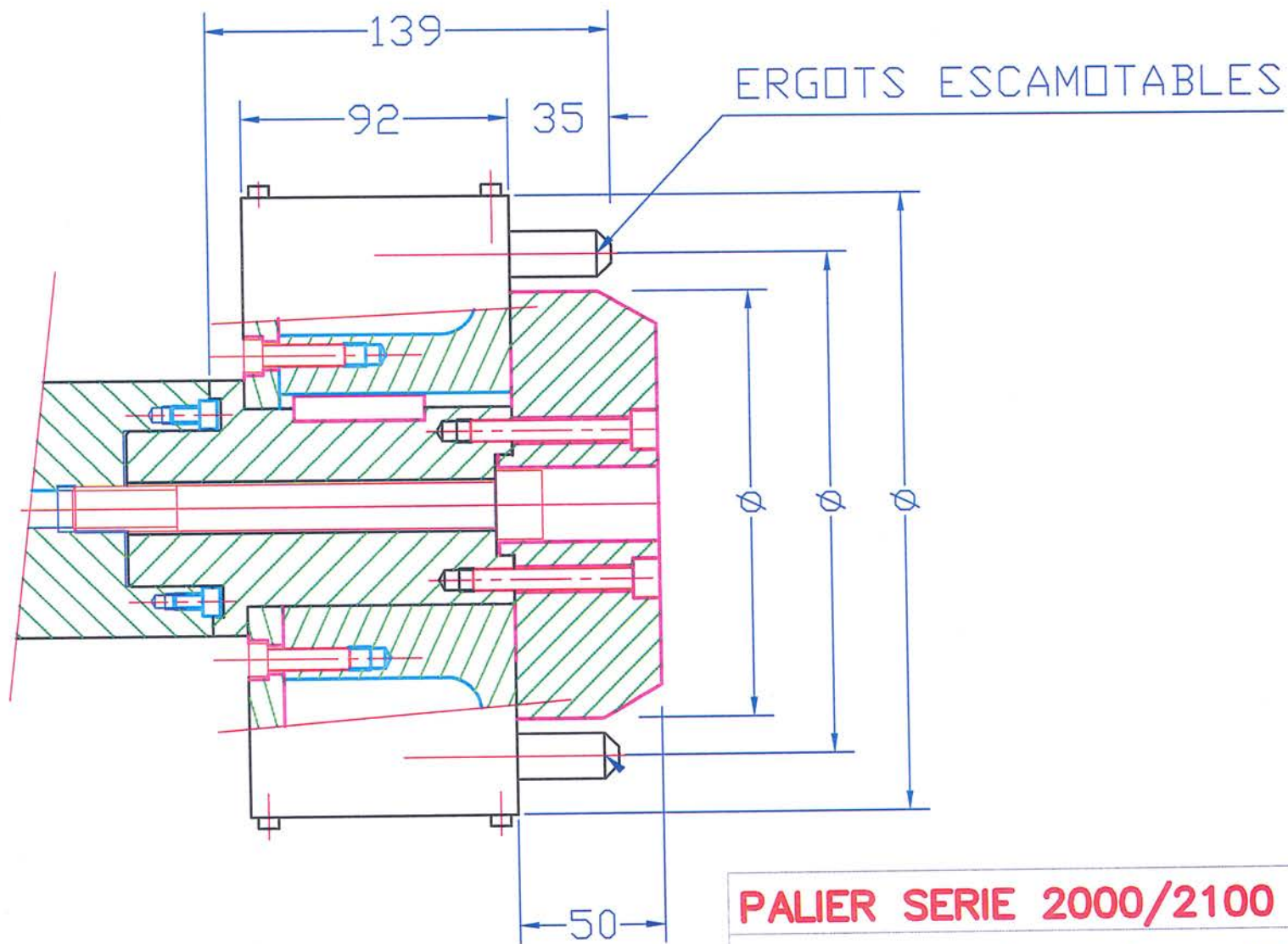
TETE ENTRAINEMENT MIXTE A

ERGOTS POUR COUPLES IMPORTANTS

**MBC**

*Guttin*





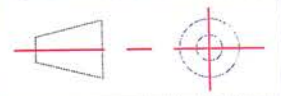
**PALIER SERIE 2000/2100**

TYPE 20/30-30/40-40/50-50/80

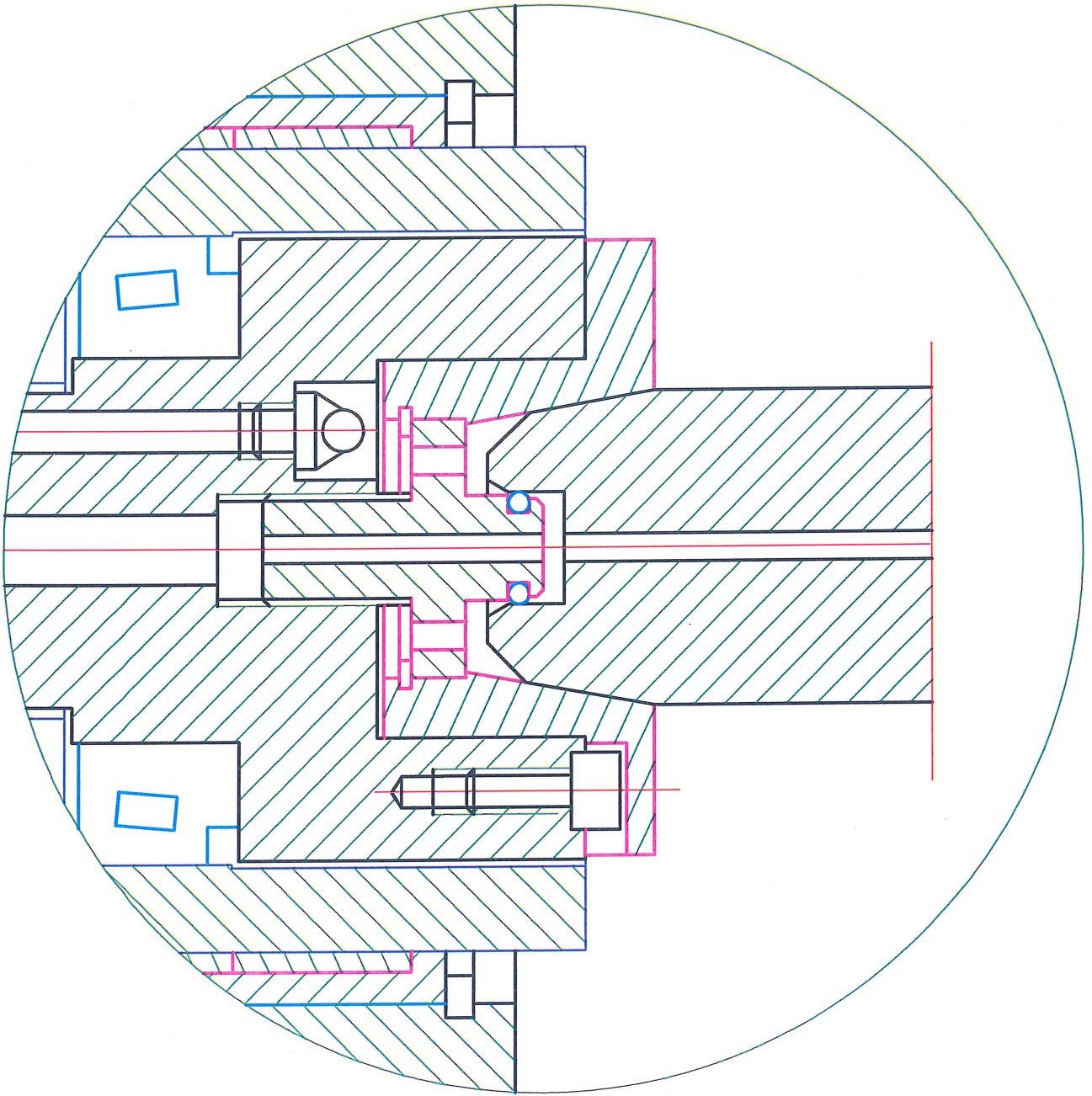
TETE ENTRAINEMENT A ERGOTS

POUR COUPLES IMPORTANTS

**MBC**  
*Guttin*







Désignation:

PALIER AVEC GONFLAGE AXIAL

PALIER 30/40 SFE 2000/2100

**M.B.C**  
GUTTIN



DATE:  
26/11/99

Matière

N°: 30020