

SPARE PARTS FOR EXPANSIBLE SHAFTS WITH CONTINUOUS FILLETS

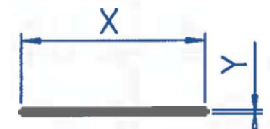
POLYURETHANE FLAT BLADDER

X	Y	Ref:
10	2.3	VP10
15	3.4	VP15
20	4	VP20



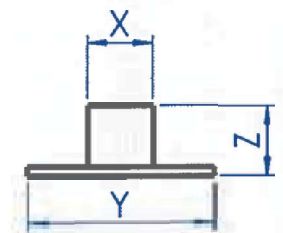
PROTECTION FILMS

X	Y	Ref:
10	0.4	FP10
15	0.4	FP15
20	0.4	FP20



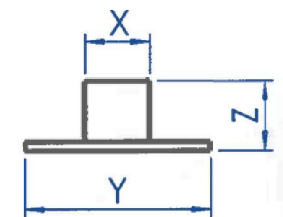
RUBBER CONTINUOUS FILLETS

X	Y	Z	Ref:
6	10	4.5	BC6
10	15	8	BC10
15	20	8	BC15



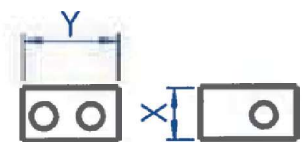
ALUMINIUM CONTINUOUS FILLETS

X	Y	Z	Ref:
10	15	8	BA10
15	20	8	BA15



BLOCKING CORNERS SET (1 SET FOR 1 CONTINUOUS FILLET SO 4 ALUMINIUM PARTS)

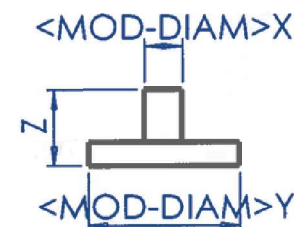
X	Y	Ref:
10	20	CB10
15	25	CB15
20	25	CB20



VALVE SIDE

BRASS AIR JET

X	Y	Z	Ref:
2	6	4	GAL 2
4.5	11	6.2	GAL4.5



BOWL VALVE

Threading **-10x100 ref: VC 10100 MBC standard mounting**
 -1/8 Npt ref: VC 1/8 Npt
 -3/8 Npt High flow ref: VC3/8 GD

SHELL VALVE

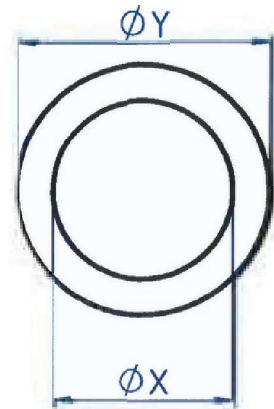
Threading -10x100 ref: VO 10100
 -8x100 ref: VO 8100
 -1/8 Gaz ref: VO 1/8 Gaz

MBC
Guttin

SPARE PARTS FOR EXPANSIBLE SHAFTS WITH LUGS

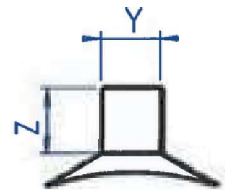
EXPANSIBLE BLADDER		
X	Y	Ref:
10	14	VT 1014
12	17	VT 1217
12	20	VT 1220
15	25	VT 1525
20	30	VT 2030
25	35	VT 2535
30	40	VT 3040
40	50	VT 4050
45	55	VT 4555
50	60	VT 5060
60	70	VT 6070
80	95	VT 8095
100	110	VT 100110

EXPANSIBLE DOUBLE BLADDER (MBC PATENT)		
X	Y	Ref:
33	37	DP 3337
38	42	DP 3842
58	64	DP 5864



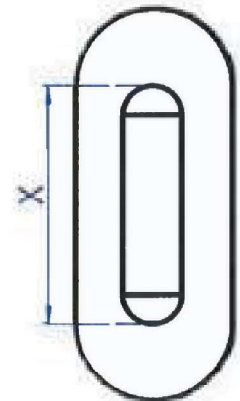
ALUMINIUM LUGS WITH RETURN SPRING				
X	Y	Z	Ref:	
50	10	12.5	CAL 5010-125	
50	12	13.5	CAL 5012-135	
50	12	15	CAL 5012-150	
100	12	13.5	CAL 10012-135	
100	12	15	CAL 10012-150	

ALUMINIUM LUGS WITH RETURN SPRING AND POINT OF A DIAMOND				
X	Y	Z	Ref:	
50	12	13.5	CAL 5012-135 PD	
50	12	15	CAL 5012-150 PD	
100	12	13.5	CAL 10012-135 PD	
100	12	15	CAL 10012-150 PD	



STEEL LUGS WITH RETURN SPRING				
X	Y	Z	Ref:	
100	12	13.5	CAC 10012-135	
100	12	15	CAC 10012-150	

STEEL LUGS POINT OF A DIAMOND WITH RETURN SPRING				
X	Y	Z	Ref:	
100	12	13.5	CAC 10012-135 PD	
100	12	15	CAC 10012-150 PD	



RUBBER LUGS				
X	Y	Z	Ref:	
50	10	13.5	CCA 5010-135	
50	12	13.5	CCA 5012-135	
50	12	15	CCA 5012-150	
100	12	13.5	CCA 10012-135	
100	12	15	CCA 10012-150	
200	12	13.5	CCA 20012-135	
200	12	15	CCA 20012-150	

Others on request

BOWL VALVE

Threading -10x100 ref: **VC 10100 MBC standard mounting**
 -1/8 Npt ref: VC 1/8 Npt
 -3/8 Npt High flow ref: VC3/8 GD

SHELL VALVE

Threading -10x100 ref: VO 10100
 - 8x100 ref: VO 8100
 -1/8 Gaz ref: VO 1/8 Gaz

MBC
Guttin